

2012 Lakeland Regional Skills Canada Competition

Scope Document

Vermilion, AB
April 19, 2012

EVENT: Carpentry	LEVEL: Secondary
TIMES: Orientation/Registration: Registration 7:30am, Orientation 8:30am Competition Start Time: 9:00am	LOCATION: Trades Centre Carpentry Shop, TC 131
DURATION: 5.5 hrs. (1/2 hr. lunch)	REGIONALIZED: Yes
Number of Competitors That Will Qualify for the 2012 Provincial Skills Canada Competition: 2	

GENERAL DESCRIPTION

The Skills Canada Alberta regional carpentry competition sees competitors build a provided carpentry project. Starting from provided drawings and diagrams, the project is built during the allotted construction time. The competitors are judged based on the quality of their project in the face of the judging criteria.

Purpose of Challenge:

- To evaluate each contestant's competency to organize and execute a given work assignment accurately and safely in the carpenter trade.
- To recognize outstanding excellence and professionalism.

PROJECT DESCRIPTION

DOGHOUSE (PLEASE SEE ATTACHED PROJECT DRAWING)

EQUIPMENT & MATERIALS - NOTE: NO PERSONAL ELECTRONIC DATA DEVICES (CELL PHONES, PDAS, ETC.) WILL BE ALLOWED IN THE COMPETITION AREA.

Equipment and Materials Competitors Can Supply:

NOTE: COMPETITORS MUST SUPPLY AND WEAR APPROPRIATE WORK CLOTHING AND CSA STEEL TOE BOOTS

Measuring/Layout	Cutting Tools	Assembly Tools	Miscellaneous
pencils	10-12 pt. finishing hand saw	hammer	Non-programmable calculator
combination square	smooth plane	wood chisels	Carpenters apron
metric tape measure	block plane	screwdriver (Robertson #2)	sandpaper
framing square		12" bar clamps (2)	sanding block
sliding T-bevel			
chalk line			
speed square/try square			

NOTE: ALL HAND AND POWER TOOLS WILL BE PROVIDED TO EACH COMPETITOR, BUT THEY MAY SUPPLY THEIR OWN

HAND TOOLS IF THEY WISH.

Equipment and Materials Supplied by the Committee:

POWER TOOLS	OTHER
circular saw	workbench
jig saw	driver bits
cordless drill	CSA approved safety glasses
	CSA approved hearing protection

*** No additional power tools or power tools accessories will be allowed during the competition.**

SAFETY

The health, safety and welfare of all individuals involved with Skills Canada Alberta are of vital importance. Safety is a condition of participation with Skills Canada Alberta and shall not be sacrificed for the sake of expediency. At the discretion of the judges and technical committees, any competitor can be denied the right to participate should they not have the required proper safety equipment and/or act in an unsafe manner that can cause harm to themselves or others.

Safety Requirements: **MANDATORY**

- CSA approved steel toed shoes/work boots
- CSA approved safety glasses (provided by Lakeland College)
NOTE: prescription glasses must conform to CSA regulations
- CSA approved hearing protection (provided by Lakeland College)
- Suitable work clothing
- Competitors are required to follow all industry safety standards during the competition.

JUDGING CRITERIA

- demonstrate skills and competencies in interpreting plans and specifications
- safety during project construction
- ability to complete project in specific time period
- proper selection and use of tools
- general work attitude
- innovative techniques used
- quality and accuracy

RELATED CAREER AND TECHNOLOGY STUDIES COURSES

Descriptions of all modules are located at the following website:

<http://www.education.gov.ab.ca/cts>

- CON 1010 CONSTRUCTION TOOLS AND MATERIALS
- CON 1070 BUILDING CONSTRUCTION
- CON 1120 PRODUCT MANAGEMENT
- CON 1130 SOLID STOCK CONSTRUCTION
- CON 2035 FRAMING SYSTEMS - FLOOR
- CON 2045 FRAMING SYSTEMS – WALL
- CON 2050 ROOF STRUCTURES 1
- CRA 3400 INTRODUCTION TO WORK SITE SAFETY

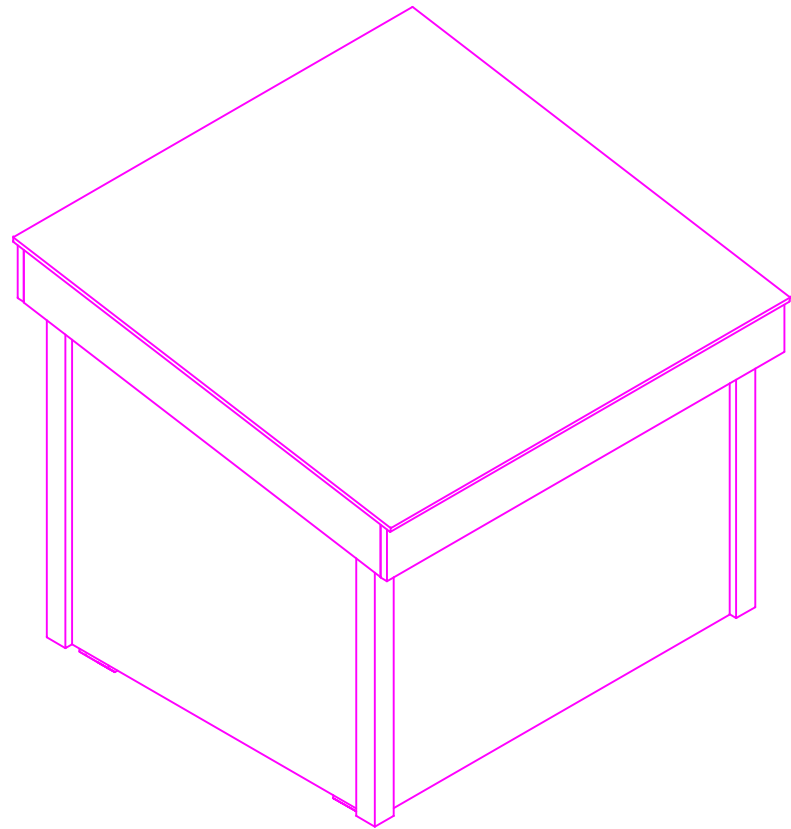


ADDITIONAL INFORMATION

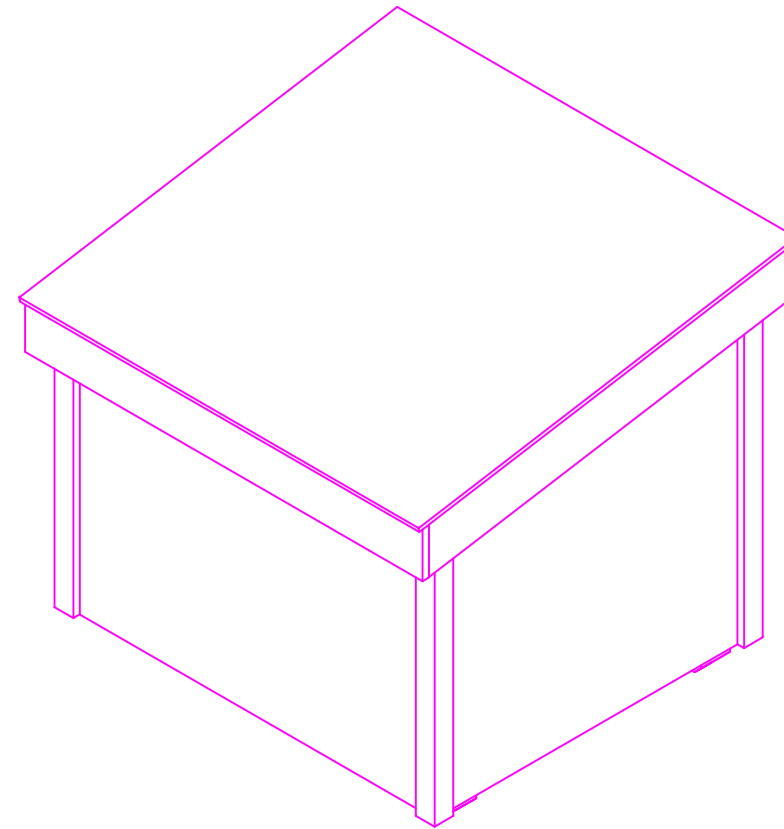
- Lunch will be provided for the competitors
- Parking Information & Venue Maps - <http://www.lakelandcollege.ca/admissions/visit-Lakeland/vermilion-maps-directions.aspx>
- Awards Ceremony Information - Located in W.H.T. Mead Building Room MB136
-
- PSCC/SCNC Progression Information - <http://www.lakelandcollege.ca/academics/trades-tech-apprenticeship/skills/>

COMMITTEE MEMBERS

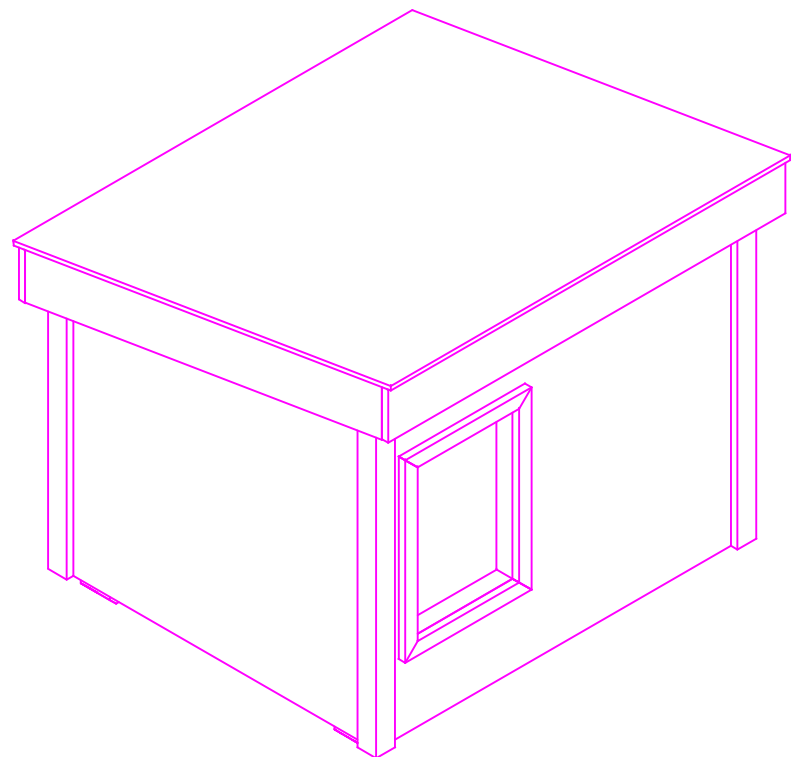
Jordan Kalczak
Neil Napora



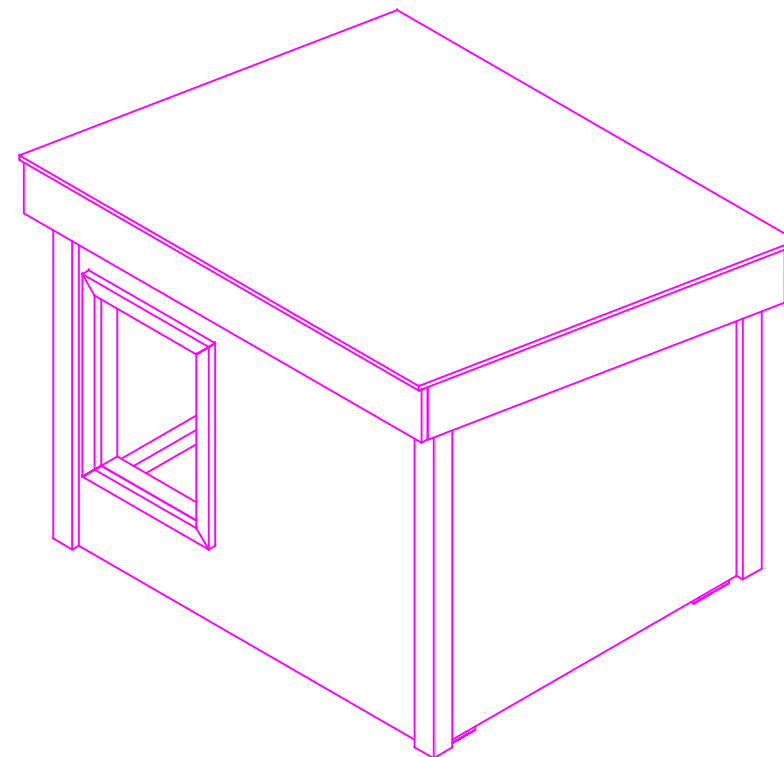
NORTHWEST ISOMETRIC



NORTHEAST ISOMETRIC



SOUTHWEST ISOMETRIC



SOUTHEAST ISOMETRIC

General Notes

FOR EDUCATIONAL PURPOSE ONLY

No.	Revision/Issue	Date



DOG HOUSE PROJECT

ISOMETRIC		Sheet 1
Drawing	DEC 2011	
Date	1:20	
Scale		