

## 2012 South West Regional Skills Canada Competition

### Scope Document

Lethbridge College, TR1835

April 19, 2012

<b>EVENT:</b> Carpentry	<b>LEVEL:</b> Secondary
<b>TIMES:</b> Check-in: 7:30 am Orientation: 7:45 am Competition Start Time: 8:00 am to 3:00 pm	<b>LOCATION:</b> Lethbridge College, TR1835
<b>DURATION:</b> 5.5 hours	<b>REGIONALIZED:</b> Yes – Secondary only
Number of Competitors That Will Qualify for the 2012 Provincial Skills Canada Competition: 2	

#### GENERAL DESCRIPTION

- To evaluate each contestant's competency to organize and execute a given work assignment accurately and safely in the carpenter trade.
- To recognize outstanding excellence and professionalism.

**PROJECT DESCRIPTION:** Doghouse (see attached diagram)

#### EQUIPMENT & MATERIALS

**NOTE:** no personal electronic data devices (cell phones, pdas, etc.) will be allowed in the competition area.

#### Equipment and Materials Supplied by the Committee:

##### Measuring/Layout

- pencils
- metric tape measure
- framing square
- combination square
- sliding T-bevel
- chalk line

##### Cutting Tools

- wood chisels
- smooth plane
- block plane
- 10-12 point finishing hand saw
- cordless jig saw
- cordless circular saw

##### Assembly Tools

- hammer
- Robertson #2
- cordless drill
- driver bits
- Drill bits

##### Miscellaneous

- carpenter's apron
- 12" bar clamps (2)
- sanding block
- sandpaper
- non-programmable calculator
- eye and ear protection

- All materials and fasteners for the project will be supplied.
- The above noted power tools and equipment will be provided however, competitors may bring their own if they wish.

#### Equipment supplied by Competitor

- CSA approved steel toed shoes/work boots (toe caps provided for competitors without approved footwear)
- Suitable work clothing

- Competitors are required to follow all industry safety standards during the competition.

## SAFETY

The health, safety and welfare of all individuals involved with Skills Canada Alberta are of vital importance. Safety is a condition of participation with Skills Canada Alberta and shall not be sacrificed for the sake of expediency. At the discretion of the judges and technical committees, any competitor can be denied the right to participate should they not have the required proper safety equipment and/or act in an unsafe manner that can cause harm to themselves or others. **Please see attached hazard assessment.**

## JUDGING CRITERIA

- demonstrate skills and competencies in interpreting plans and specifications
- safety during project construction
- ability to complete project in specific time period
- proper selection and use of tools
- general work attitude
- innovative techniques used
- quality and accuracy

## RELATED CAREER AND TECHNOLOGY STUDIES COURSES

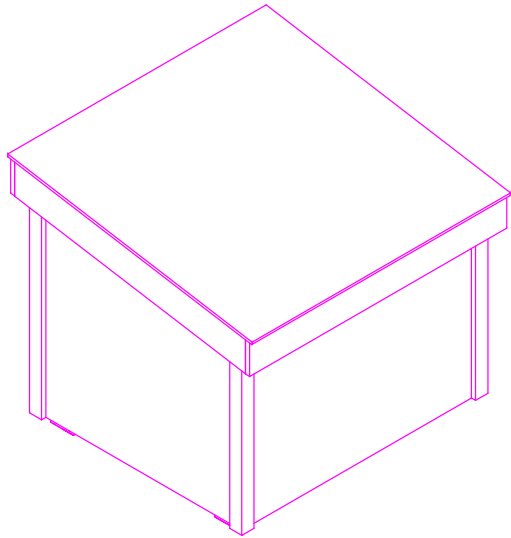
CON 1010 CONSTRUCTION TOOLS AND MATERIALS  
 CON 1070 BUILDING CONSTRUCTION  
 CON 1120 PRODUCT MANAGEMENT  
 CON 1130 SOLID STOCK CONSTRUCTION  
 CON 2035 FRAMING SYSTEMS - FLOOR  
 CON 2045 FRAMING SYSTEMS – WALL  
 CON 2050 ROOF STRUCTURES 1  
 CRA 3400 INTRODUCTION TO WORK SITE SAFETY

## ADDITIONAL INFORMATION

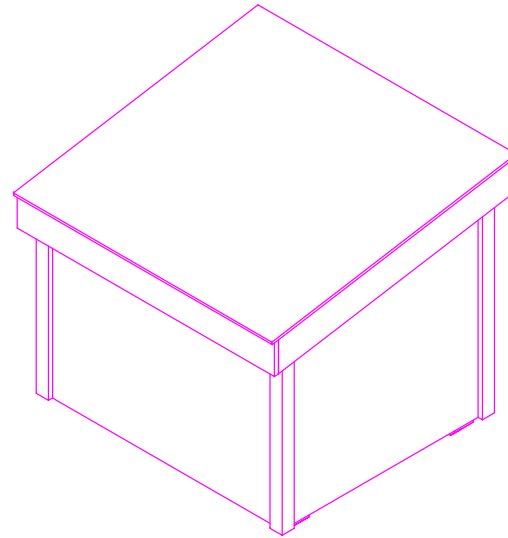
Skills Canada Alberta has allocated two spots at the Provincial Competition for the gold and silver medalists from the regional competition. Should either medalist choose not to attend the Provincial Competition the spot would be offered to the bronze medalist. The provincials are scheduled for May 10 & 11 at the Edmonton Expo Centre Northlands in Edmonton, Alberta. Travel expenses and preparation for the provincials are the competitor's responsibility. Please see [www.skillsalberta.com](http://www.skillsalberta.com) for details.

## COMMITTEE MEMBERS

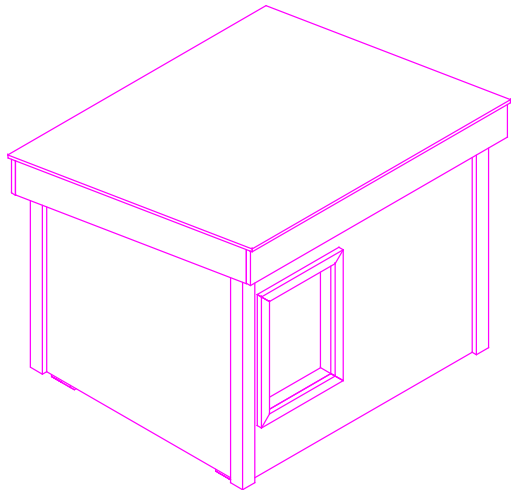
Marvin VandenHoek	Calvin Christian School
Lehi Heath	Lethbridge College
Leon Wensmann	Lethbridge College
Frank Pawlak	Lethbridge College
Stephen Neis	Lethbridge College
Cal Whitehead	Lethbridge College
Corby Pankhurst	Lethbridge College
Erick Stewart	Magrath High School
Mark Mousseau	The Oak Market
Margaret Vennard	Career Transitions



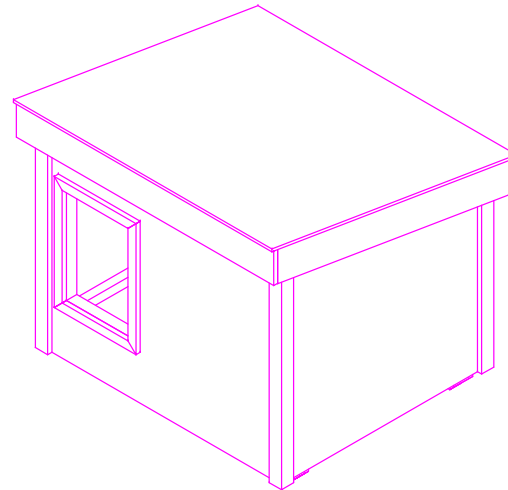
NORTHWEST ISOMETRIC



NORTHEAST ISOMETRIC



SOUTHWEST ISOMETRIC



SOUTHEAST ISOMETRIC

General Notes

FOR EDUCATIONAL PURPOSE ONLY

No.	Revision/Issue	Dr



DOG HOUSE PROJECT

ISOMETRIC		Sheet 1
Drawing	DEC 2011	
Date	1:20	
Scale		



Department/Faculty: Cabinet Making/Carpentry	Position: Skills Canada Competition	
Assessment completed by: Kim Harvey	Date: 2011	Revision Date:

Type of Work/Activity	Hazard Type: (Physical, Chemical, Biological, Ergonomic, Environmental)	Risk (1-3) See below				Controls in Place	Controls Needed
		Exposure	Severity	Probability	Total		
<b>List all types of work done in this work area or job</b>	<b>List the hazards for each work related activity</b>					<b>Engineered Administrative Personal Protective Equipment</b>	<b>List if any additional controls are required for that Hazard and the date they will be in place</b>
<b>Shop Work</b>	Noise, dust, slips, trips, falls, falling objects.	2	2	2	6	Hearing protection, ventilation, housekeeping, safety toed boots and appropriate work clothing.	
<b>Using stationary power tools, (example table saw, planer, etc.)</b>	Cuts, pinch points, kick back (impalement) amputation, dust, eye injury, noise	2	2	2	6	Guards, touch stop, procedures, body and hand position, (line of fire), safety glasses. Only authorized personnel in work area, hearing protection, dust collector.	
<b>Using hand power tools</b>	Cuts, pinch points, amputation, eye injury noise	2	2	2	6	Guards, procedures, body and hand position (line of fire), hearing protection, only authorized personnel in work area, safety glasses.	
<b>Using hand tools</b>	Cuts, puncture wounds, crush injury.	2	1	2	5	Tools in good condition, proper tool for the job, proper hand position, eye protection	
<b>Using air nozzle</b>	Eye injury, injection, spreading dust, pushing dust particles into the skin.	1	2	2	5	Pressure regulated to 30 LBS., low pressure high volume nozzles, do not use air nozzle to blow dust of yourself.	

**Frequency Rating:**

1. Low, less than 10% of work day
2. Medium, up to 65% of work day
3. High, over 66% of work day

**Severity:**

1. Minor, potential for minor injury
2. Moderate, potential for lost time injury
3. Severe, potential for severe injury

**Probability:**

1. Low, unlikely to happen
2. Medium, likely to happen
3. High, very likely to happen

**Hazard Rating:**

- 3-4 Low, requires monitoring
- 5-6 Moderate, requires attention
- 7-9 High, requires immediate attention