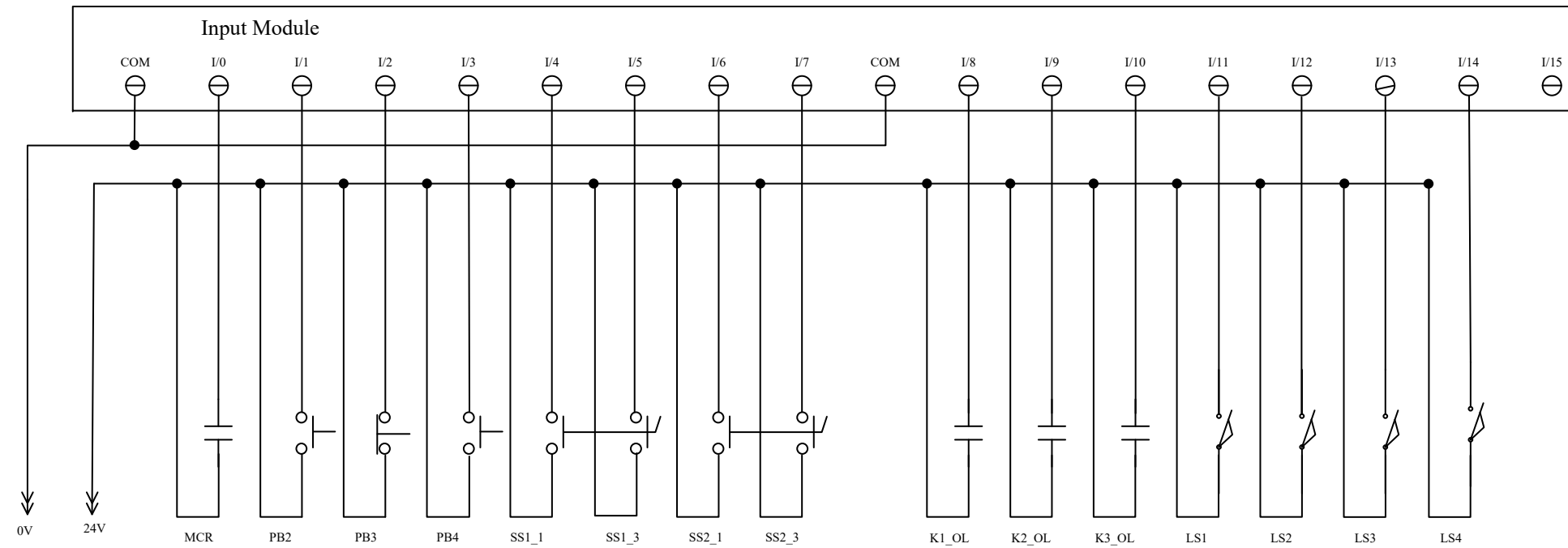
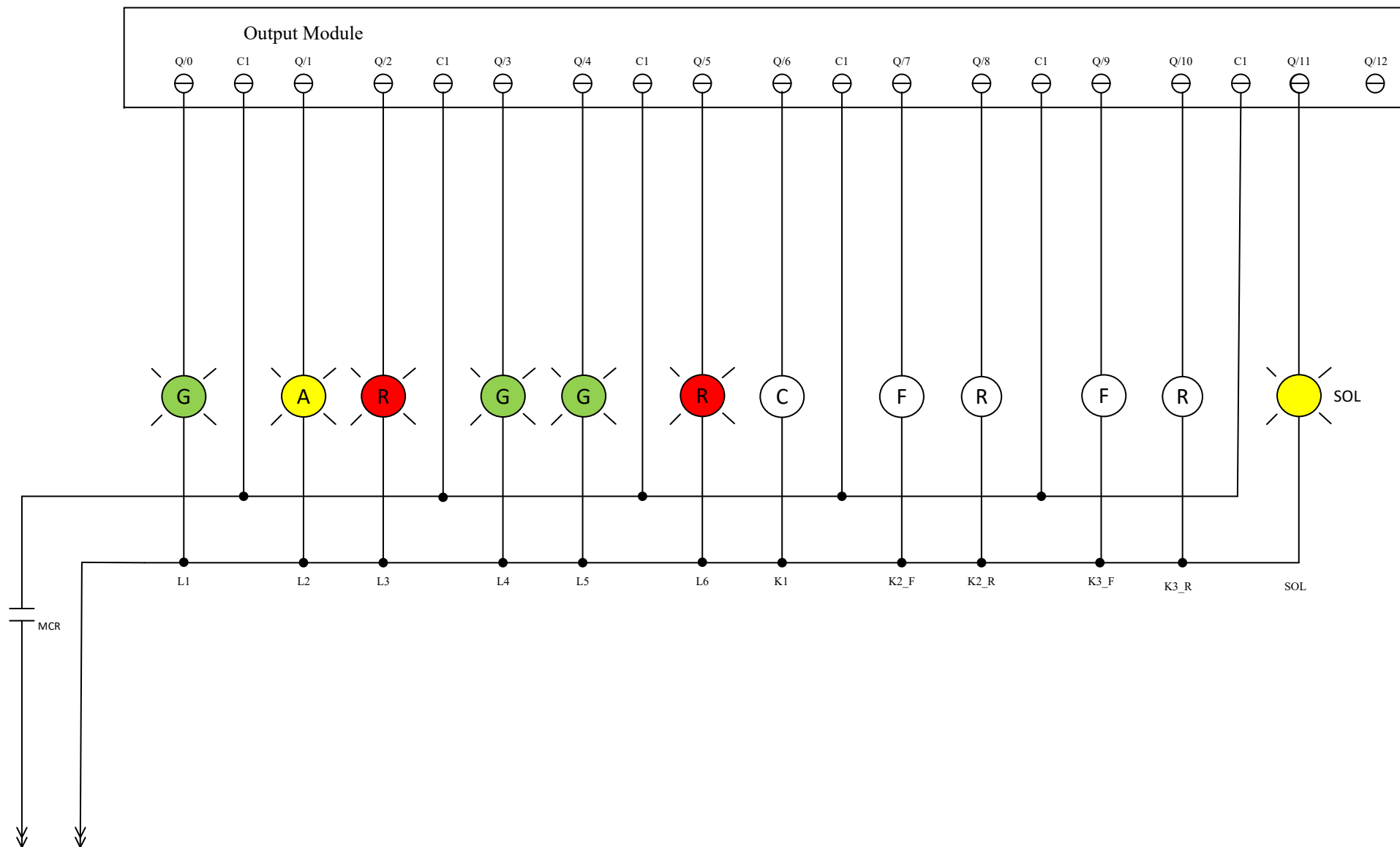
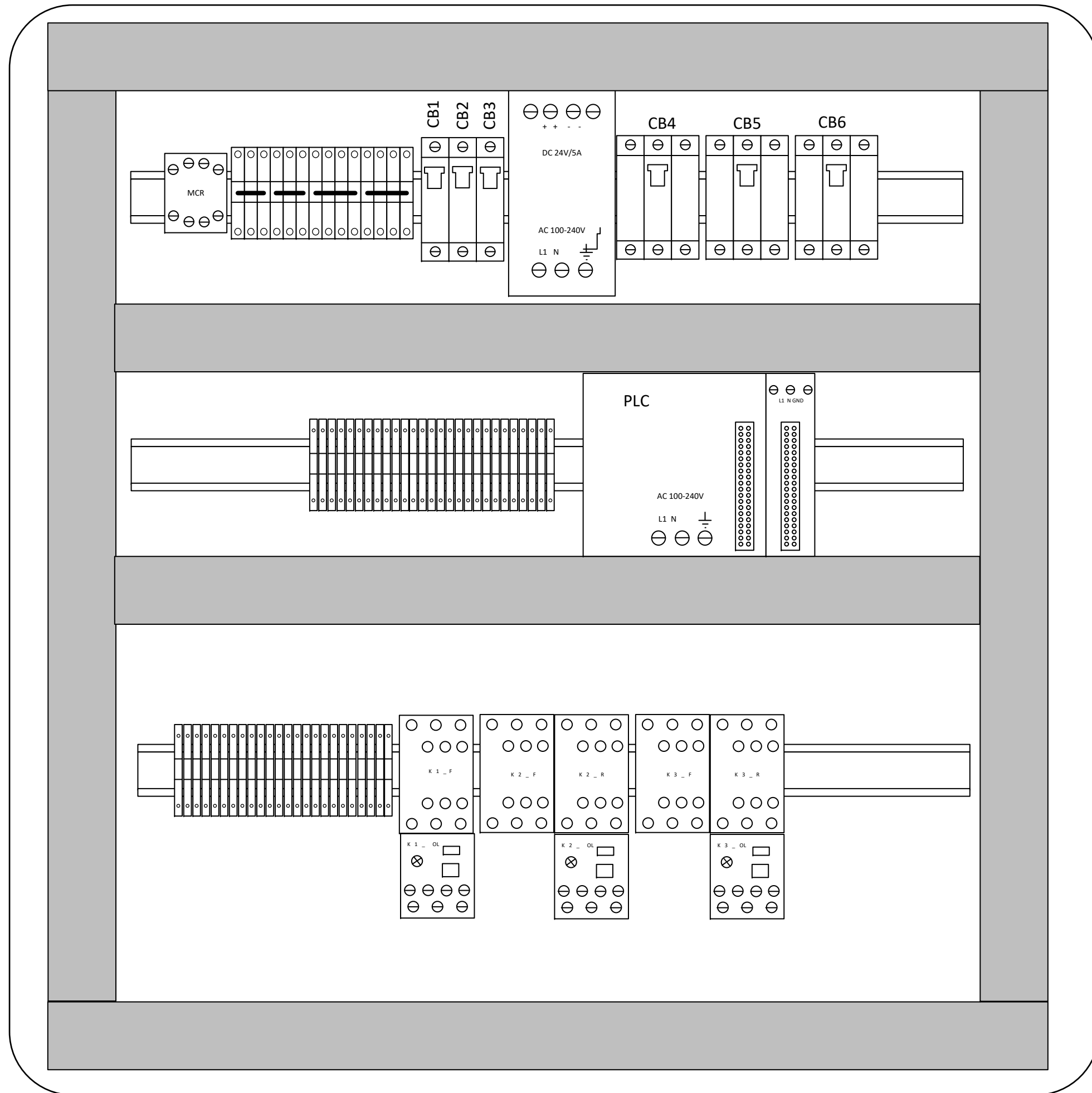


Refer to Page 2

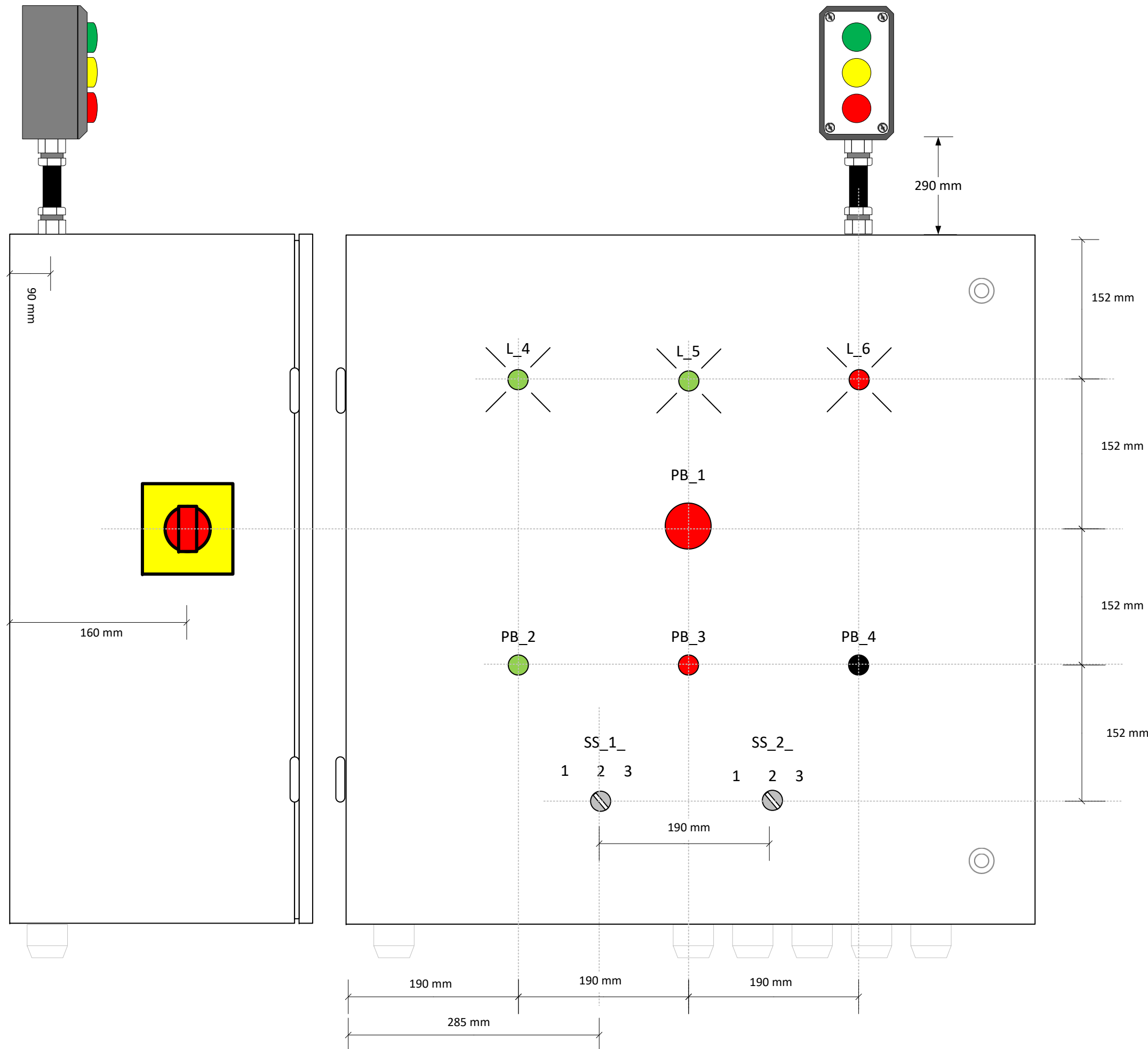


Note: Specific PLC brands may require different wiring



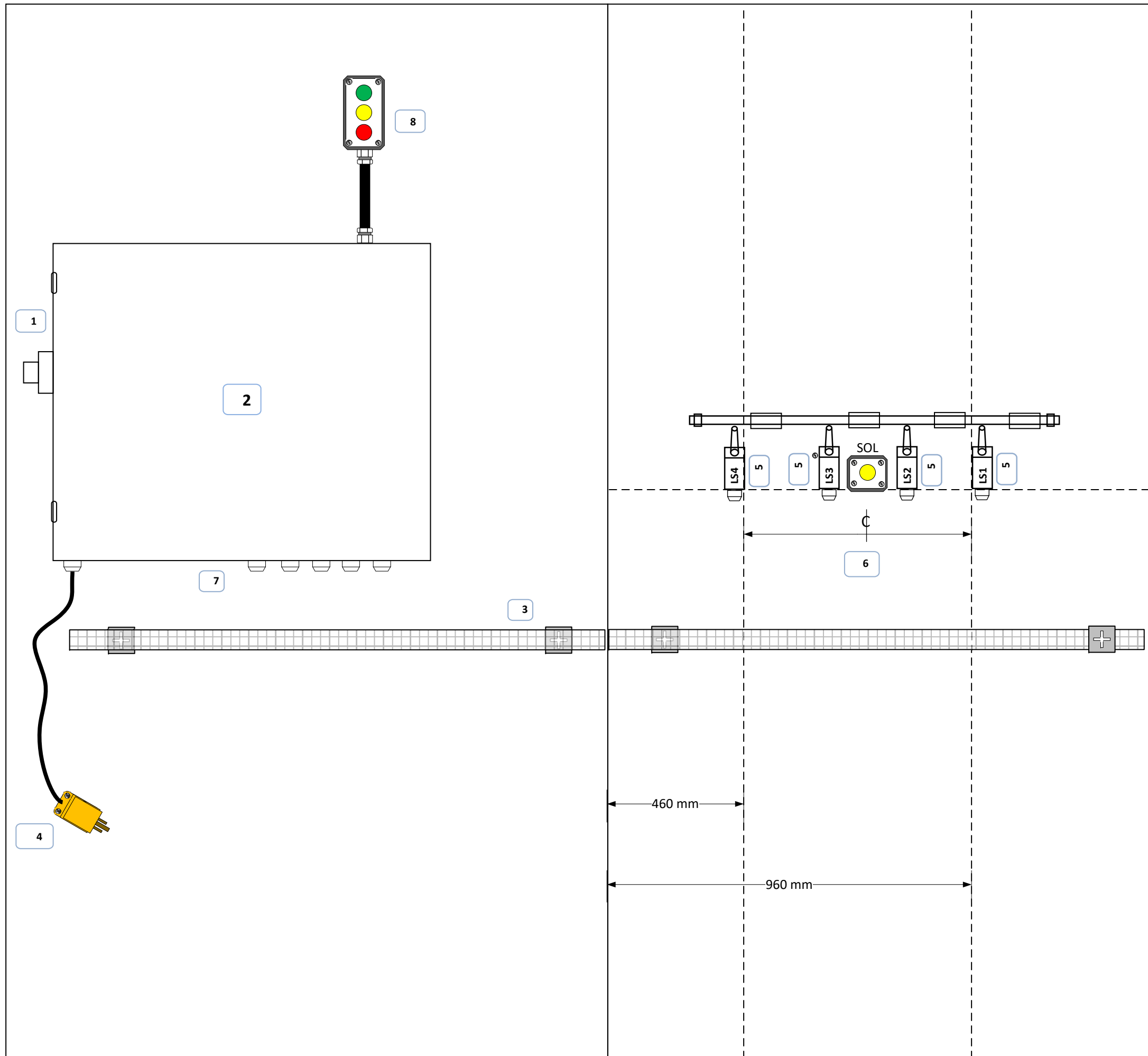


This is a suggested layout.
Competitors can choose any
layout with provided
material.



Drawing Not to Scale

No dimensions specified for cable glands



All measurements will be taken from where shown on the drawing. If no dimension is shown, it shall be up to the installers discretion. All measurements will be taken to the flat portion of the device.
 Drawing not to scale

- 1) Panel Mount Disconnect
- 2) Control Cabinet
 See page 4
 Pre-installed
 Cabinet door requires bonding
- 3) Basket Tray
 Pre-installed
 Bonding required
- 4) 5-15P Cord End
- 5) Limit Switch
 Use 2C18, no bonding required
- 6) Single Device Station (Solenoid)
 Use 2C18, no bonding required
- 7) Cable Glands
 No dimensions specified
- 8) Indicating Light Box
 See page 4 for mounting dimensions

1120 mm

460 mm

960 mm