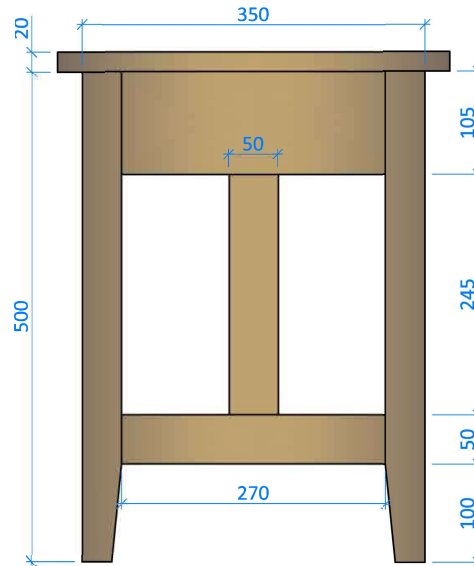
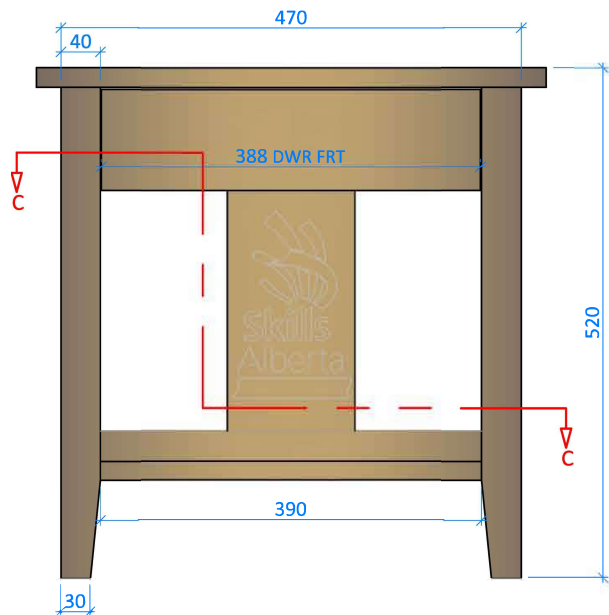


DRAWER CORNER JOINERY SCALE 1 : 1
TYPICAL ALL 4 CORNERS



TOP, FRONT AND RS ORTHOGRAPHIC VIEWS SCALE 1 : 5

NOTES:

- TOP:**
- 19 MM PARTICLE BOARD AND DIAMOND MATCH VENEER
 - 20 X 20 SOLID EDGING, MITRED CORNERS
- FRAME:**
- CHERRY SOLIDS AND SHEET GOODS
 - BACK PANEL SUPPLIED TO SIZE
- DRAWER JOINERY:**
- HANDCUT DOVETAILS, MARKED BEFORE AND AFTER ASSEMBLY

PROJECT:

Once upon a table ...

LEVEL:

Post Secondary

Drawing Description

Ortho Views & Dwr Detail

DATE:

Nov 11, 2021

SCALE:

As Noted

DRAWN BY:

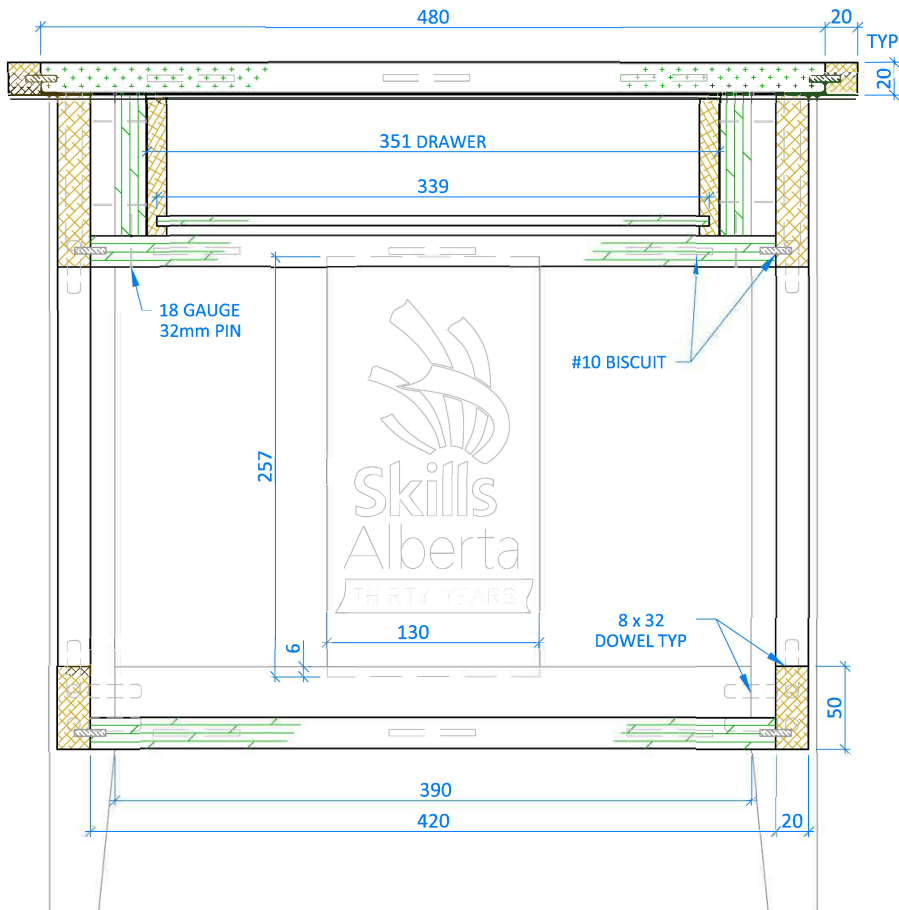
HB

SHEET:

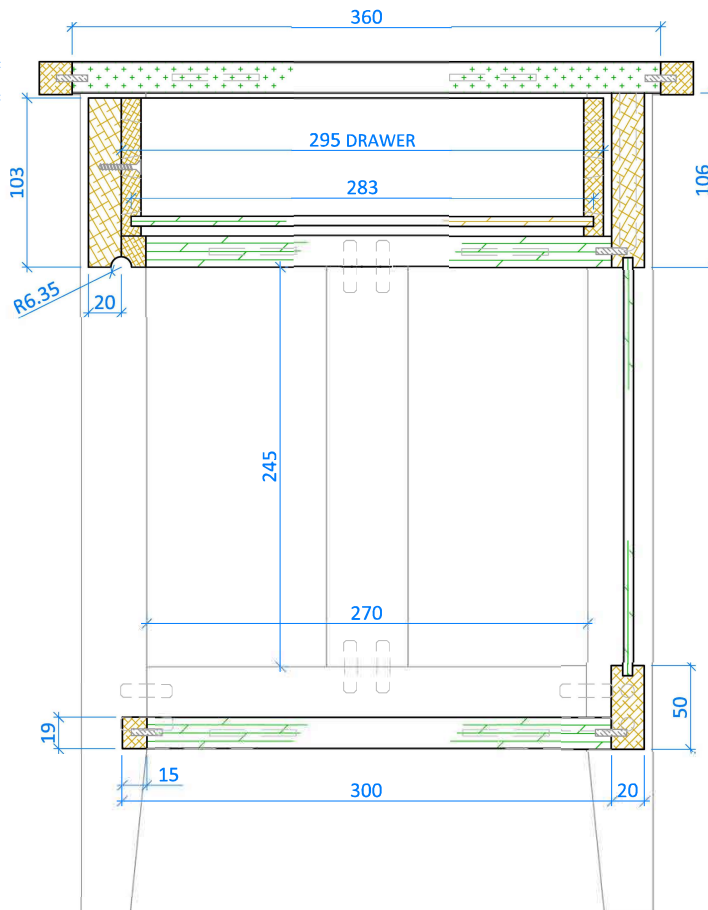
1 of 4

NOTE:
DRAWINGS FOR TRAINING PURPOSES ONLY
COMPETITION PROJECT MAY HAVE UP TO 30% CHANGE

NOTE:
DRAWINGS FOR TRAINING PURPOSES ONLY
COMPETITION PROJECT MAY HAVE UP TO 30% CHANGE



SECTION A : A SCALE 1 : 3



SECTION B : B SCALE 1 : 3



- NOTES:
- TOP:
- 19 MM PARTICLE BOARD AND VENEER
 - 20 X 20 SOLID EDGING
- FRAME:
- CHERRY SOLIDS AND SHEET GOODS
- FRAME JOINERY:
- STUB TENONS, DOWELS AND #10 BISCUITS
 - INTERIOR SHELVES NOTCHED FOR LEGS
 - BACK PANEL SUPPLIED TO SIZE

PROJECT:

Once upon a table . . .

LEVEL:

Post Secondary

Drawing Description

Sections A : A & B : B

DATE:

Nov 11, 2021

SCALE:

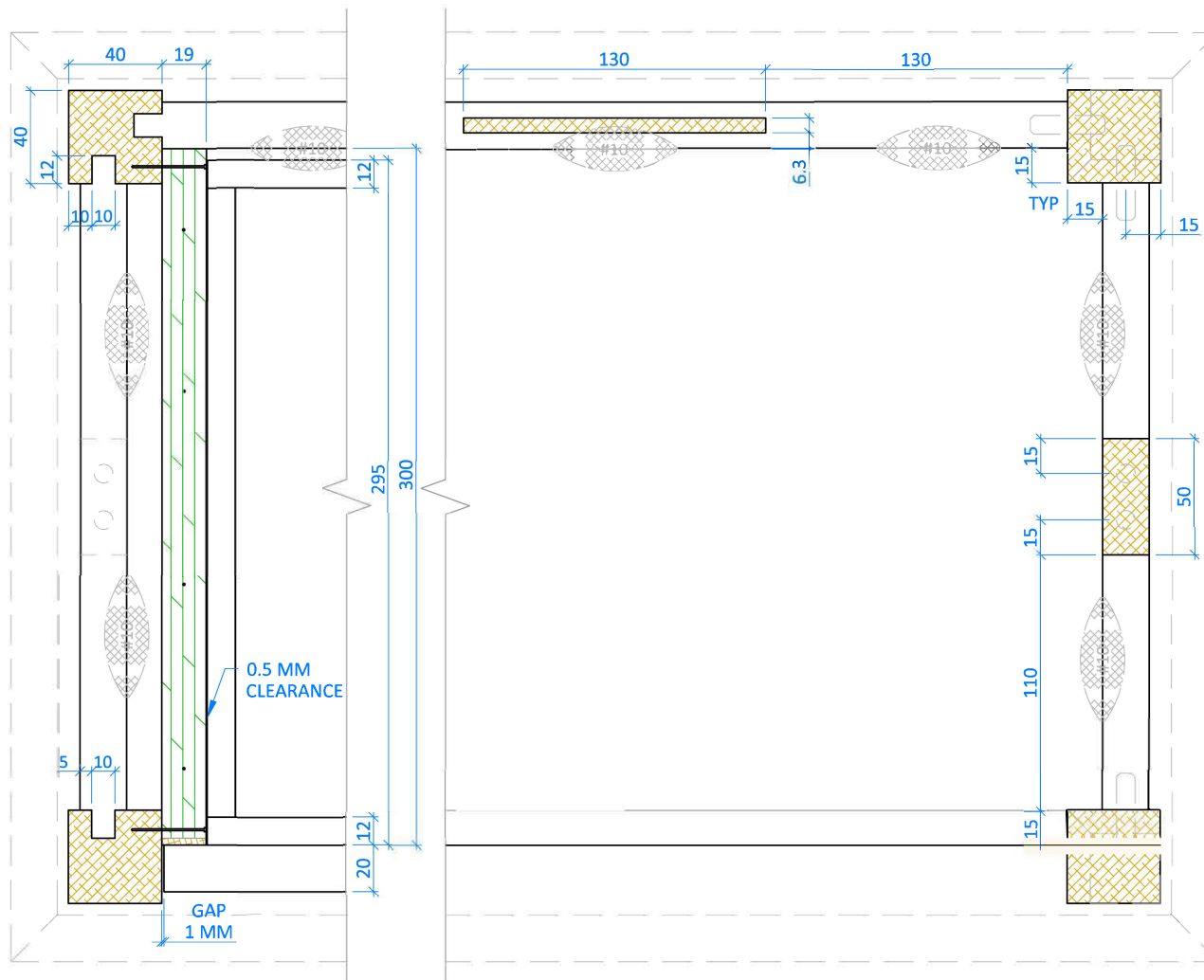
As Noted

DRAWN BY:

HB

SHEET:

2 of 4



SECTION C : C SCALE 1 : 2

NOTES:

- DRAWER SPACERS SUPPLIED WITH FRONT EDGING, TRIM TO SIZE, GLUE AND PIN IN PLACE
- STOP GROOVE, $\frac{1}{8}$ " TOOLING AS SUPPLIED

PROJECT:

Once upon a table . . .

LEVEL:

**Post
Secondary**

Drawing Description

Section C : C

DATE:

Nov 11, 2021

SCALE:

As Noted

DRAWN BY:

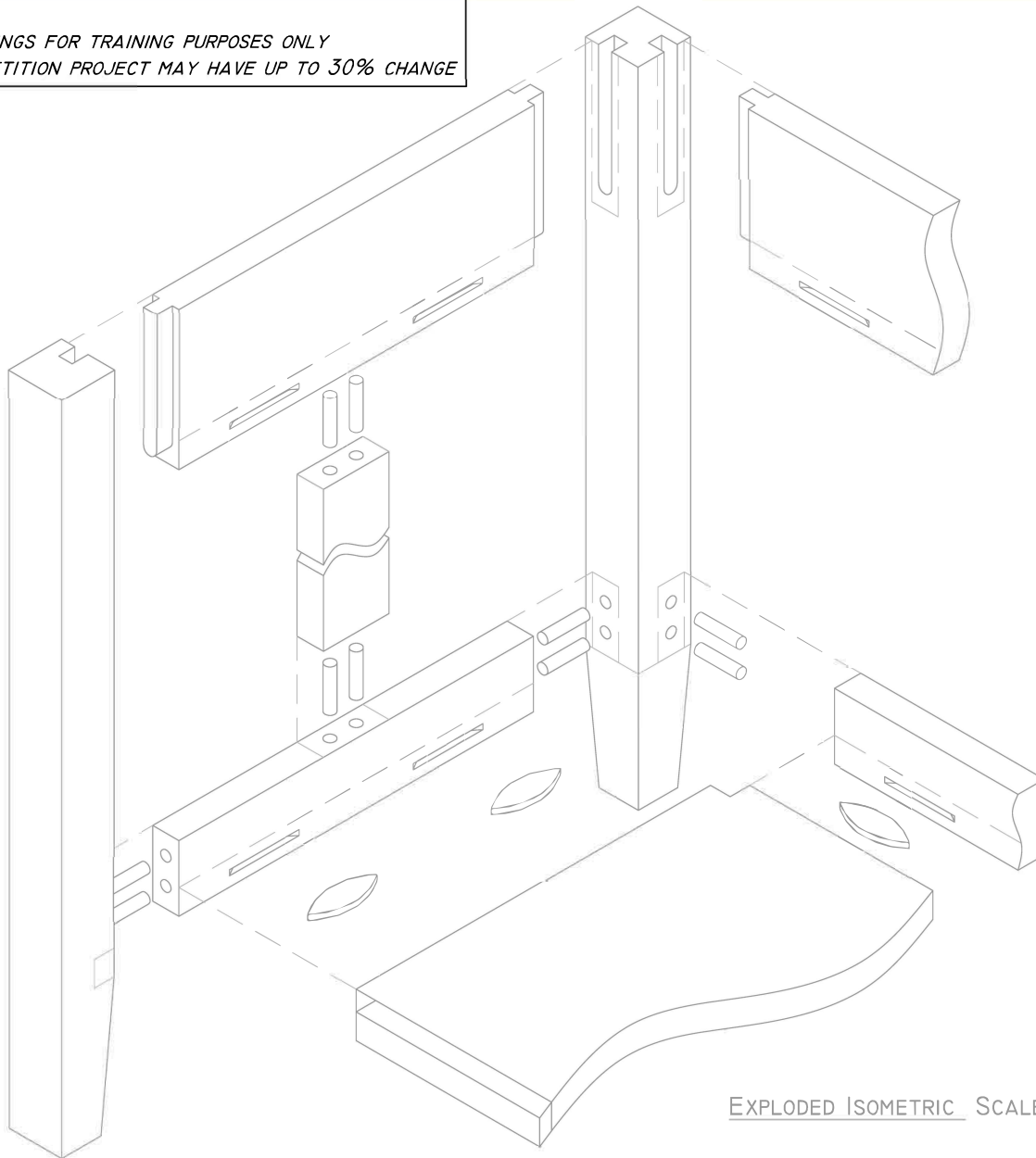
HB

SHEET:

3 of 4

NOTE:
DRAWINGS FOR TRAINING PURPOSES ONLY
COMPETITION PROJECT MAY HAVE UP TO 30% CHANGE

NOTE:
DRAWINGS FOR TRAINING PURPOSES ONLY
COMPETITION PROJECT MAY HAVE UP TO 30% CHANGE



EXPLODED ISOMETRIC SCALE 1 : 3

PROCESS CHECKLIST:

- > LEGS -
 - SLOT MORTISES FOR TOP RAILS
 - 8MM HOLES FOR LOWER RAIL DOWELS
 - TAPER INSIDE FACES, 100 UP FROM BTM
- > TOP RAILS -
 - TENONS SHAPED TO FIT MORTISES (OR MORTISES SQUARED TO FIT TENONS)
 - BISCUITS CUT FOR MID SHELF
 - HOLES FOR MUNTIN DOWELS (SIDE RAILS ONLY)
 - STOP GROOVE FOR BACK PANEL (NOT SHOWN, BACK RAIL ONLY)
- > LOWER RAILS -
 - HOLES FOR DOWELS TO LEGS
 - HOLES FOR DOWELS TO MUNTIN (SIDE RAILS ONLY)
 - BISCUITS FOR LOWER SHELF
 - STOP GROOVE FOR BACK PANEL (NOT SHOWN, BACK RAIL ONLY)
- > MUNTINS -
 - HOLES FOR DOWELS TO RAILS



NOTES:

ENSURE ALL MACHINING IS COMPLETED BEFORE ASSEMBLING COMPONENTS.
ASSEMBLE IN STAGES!
- SIDE ASSEMBLIES FIRST
- SHELVES AND BACK RAILS AFTER
FOR EXTRA "ADJUSTMENT" WITH BISCUITS, CUT #20 SLOTS AND USE #10 BISCUITS FOR ASSEMBLY

PROJECT:

Once upon a table . . .

LEVEL:

**Post
Secondary**

Drawing Description

**Exploded
Isometric**

DATE:

Nov 11, 2021

SCALE:

As Noted

DRAWN BY:

HB

SHEET:

4 of 4