

# Shop Dustpan


Sheet Metal



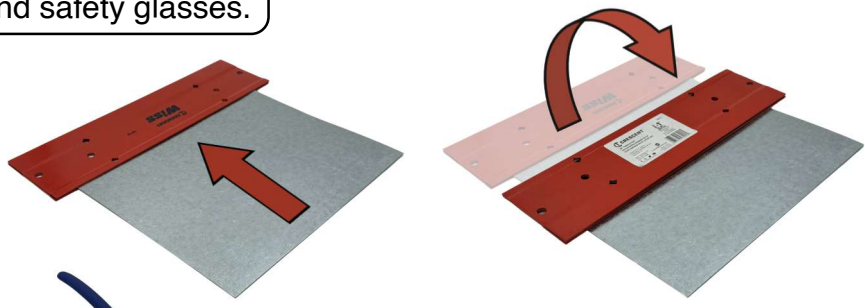
# Shop Dustpan

- Provided materials:**
- |                         |                  |
|-------------------------|------------------|
| 1. Gloves               | 8. Screwdriver   |
| 2. Safety glasses       | 9. Folding tool  |
| 3. Wooden handle        | 10. Diamond file |
| 4. Screw & lock washer  | 11. Hand punch   |
| 5. Rivet x2 & Washer x3 | 12. Brush        |
| 6. Riveter              | 13. Hand Seamer  |
| 7. Tin snips            | 14. Metal sheet  |



 **Safety First.**  
Before you begin, put on your gloves and safety glasses.

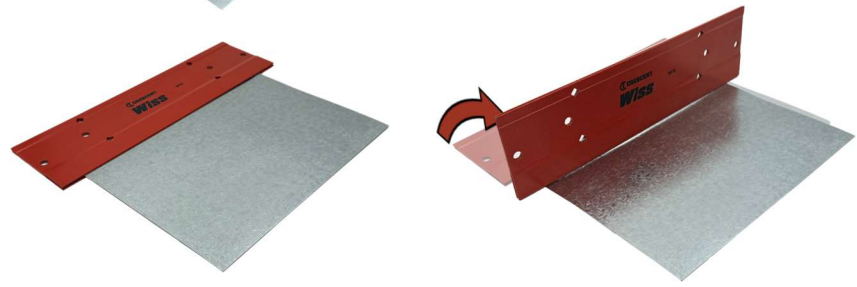
1. Insert the long side of the metal sheet into the **shallow** side of the folding tool and fold completely over.



2. Insert the fold all the way into the mouth of the hand seamer and firmly press the folds flat.



3. Insert the hemmed side of the metal sheet into the **deep** side of the folding tool and bend it up 90 degrees.



4. Using a ruler and a felt pen, draw a vertical line on the bent section of the sheet, 1" from each side. Use the tin snips to cut the metal along the line, pausing when done to fold the section slightly forward. Repeat on the opposite side.



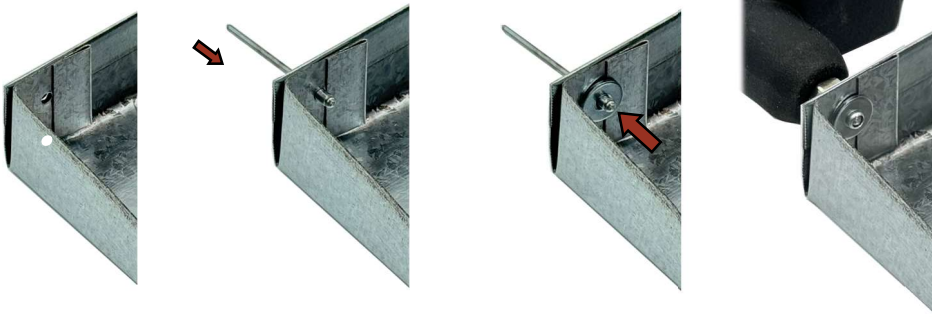
5. Draw lines from the cut made in step 4 to the adjacent corners of the metal. Use this line as a guide, using the deep side of the folding tool to bend the angled section 90 degrees up.



5. Set up the hand punch with the included 1/8" punch and matching die. Punch a hole through the centre of the overlapping tabs on each side.



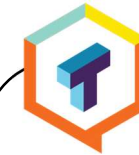
6. Insert a rivet shank-first into the hole, followed by a washer. Install the 3.2mm head on the pop riveter. Open the riveter handles fully and slide the mandrel into the head until flush with the metal. Repeatedly open and squeeze the handles to pull the mandrel through the shank until it pops off. Repeat on the opposite side.



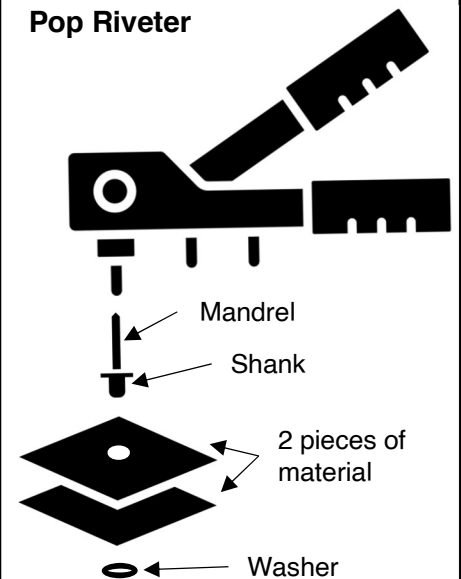
7. Round the sharp corners slightly with the tin snips and gently file off any burrs with the file. Mark and punch a hole in the centre of the back of the sheet for the handle.



8. Finally, screw the handle on using a lock washer and a regular washer in the order shown below.



### Pop Riveter



A rivet is a permanent fastener. A riveter has interchangeable heads on the handle. Use the wrench on the handle to match the head size to the rivet. Watch this short animation of how a rivet works:



Find PDF versions of these instructions at:  
[skillsalberta.com/resources/try-a-trade-take-out](https://skillsalberta.com/resources/try-a-trade-take-out)

### Try-A-Trade® Takeout Program

Activity: Shop Dustpan	V4
Skill Area: Sheet Metal	
CTS Cluster: TMT	

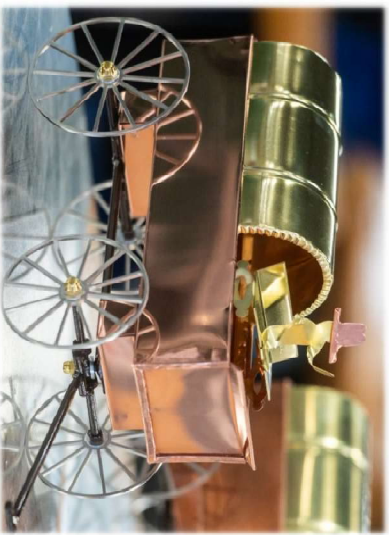


# Shop Dustpan

# Sheet Metal Worker

## Project

Students cut, bend, rivet, and seam sheet metal to fabricate a custom-made, functional product.



## Schooling

- Four-year apprenticeship.
- Red Seal Journeyperson.
- Start early with the Registered Apprenticeship Program (RAP) or explore options available through Career and Technology Studies (CTS).

## Jobs

- Design, fabricate, assemble, install, and repair sheet metal products for a variety of commercial and industrial applications.
- Average salary: \$67,075.00/year
- Average wage: \$31.75/hour

## More information:



## Find your trade:

Or visit:

[tradesecrets.alberta.ca](http://tradesecrets.alberta.ca)



Apprenticeship  
and Industry  
Training

## Plan your career:

Or visit:

[alis.alberta.ca](http://alis.alberta.ca)



Send us photos of your projects,

and tag us on social media:



#skillsalberta



@skillsalberta



@skillsalberta

