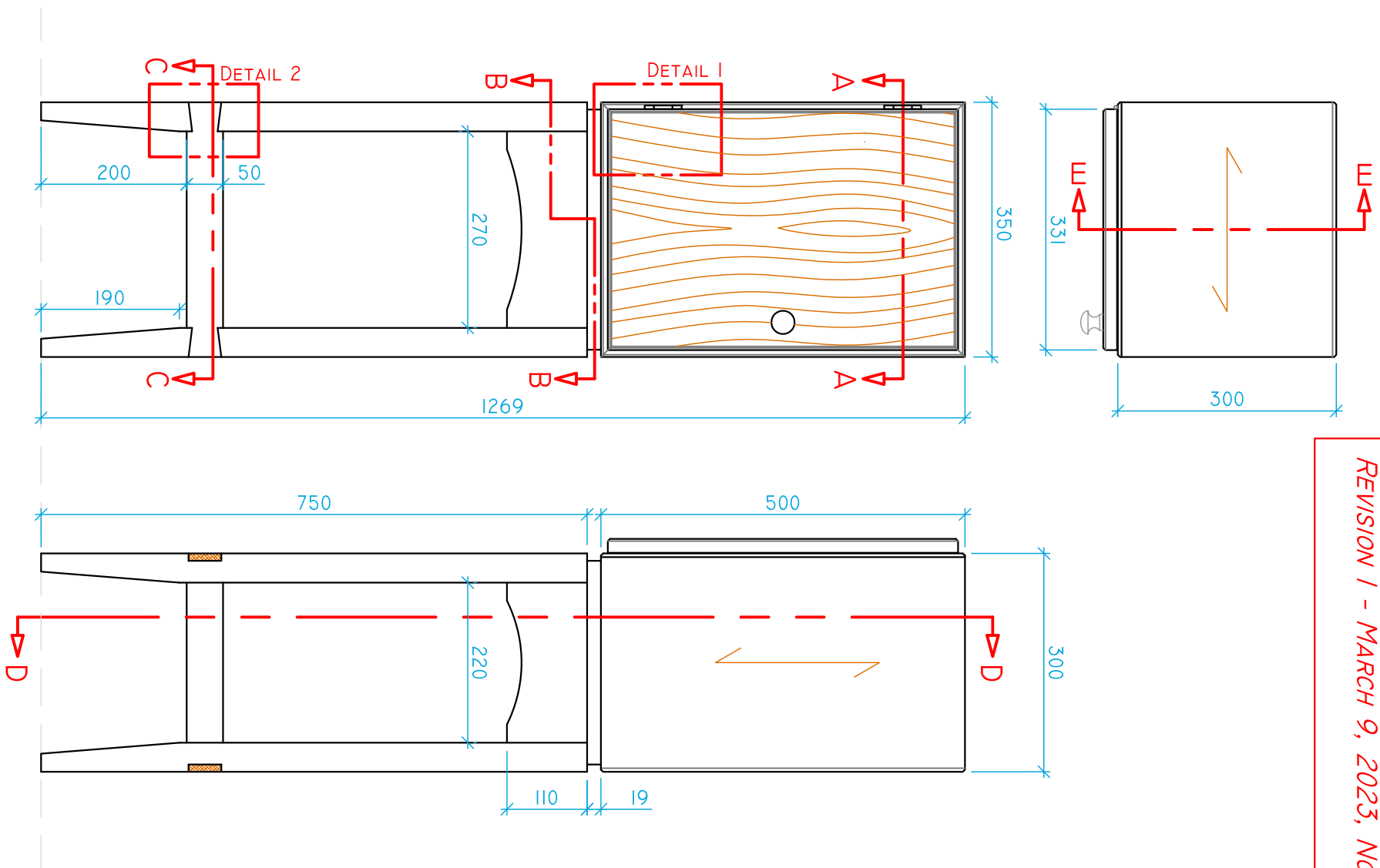
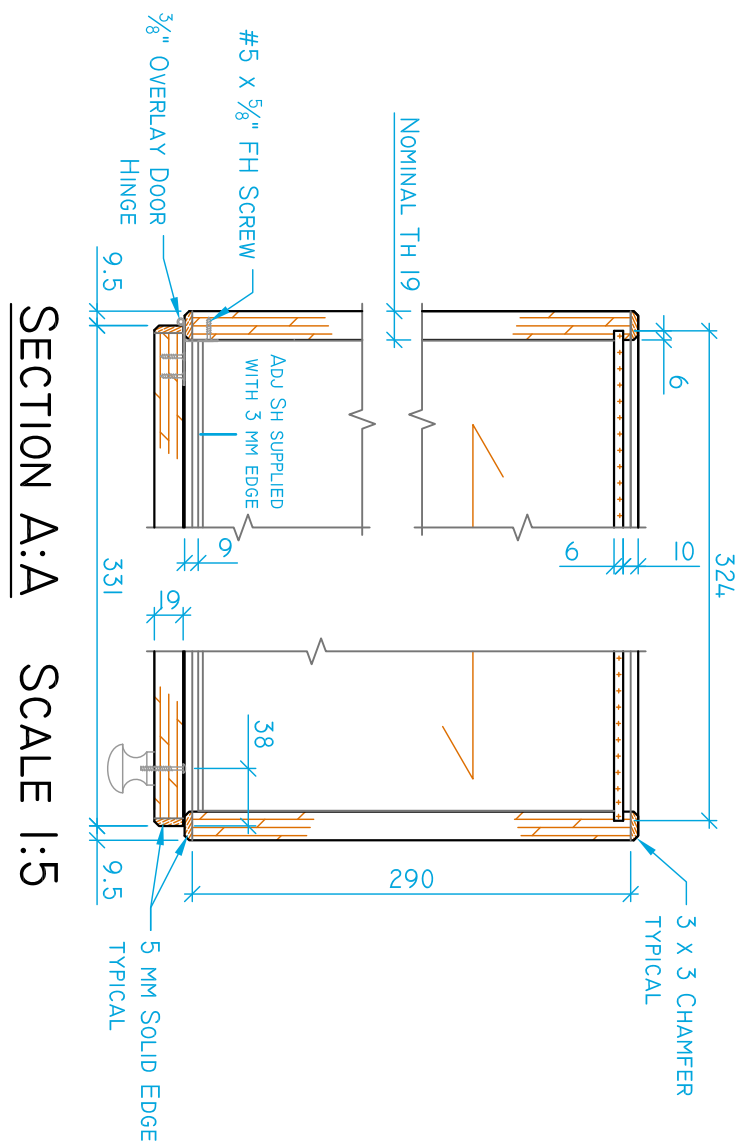


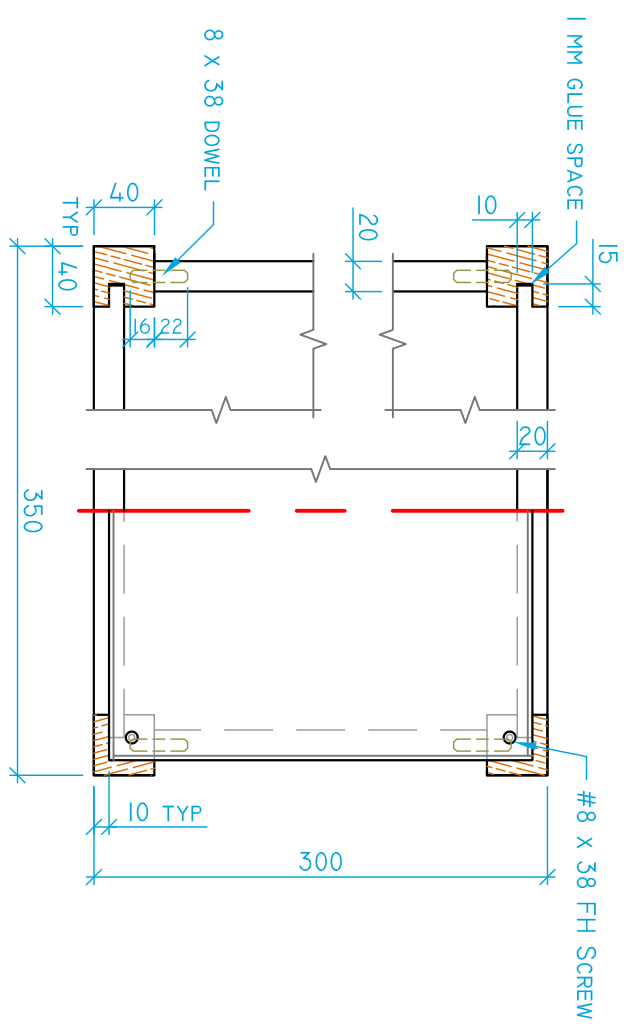
REVISION 1 - MARCH 9, 2023, NOTE CHANGES FROM PREVIOUSLY POSTED DRAWINGS



ORTHO VIEWS SCALE 1:8



SECTION A:A SCALE 1:5



SECTION B:B SCALE 1:5



NOTES:

- UPPER CASE
  - MITRED PLYWOOD WITH 5 MM SOLID CHAMFERED EDGE
- MID PANEL
  - SUPPLIED TO SIZE WITH 3 MM EDGING
- LOWER STAND
  - SOLID LEGS AND RAILS WITH MORTISE AND TENON, DOWEL AND LAP DOVETAIL JOINERY
  - TEMPLATES FOR CURVED RAIL LAYOUT WILL BE PROVIDED
- DOOR
  - PLYWOOD SLAB DOOR WITH 5 MM EDGING AND 3/8" OVERLAY HINGE

PROJECT:  
MITRED CASE WITH STAND

LEVEL:  
HIGH SCHOOL

DRAWING DESCRIPTION  
ORTHO VIEWS SECTIONS A:A & B:B

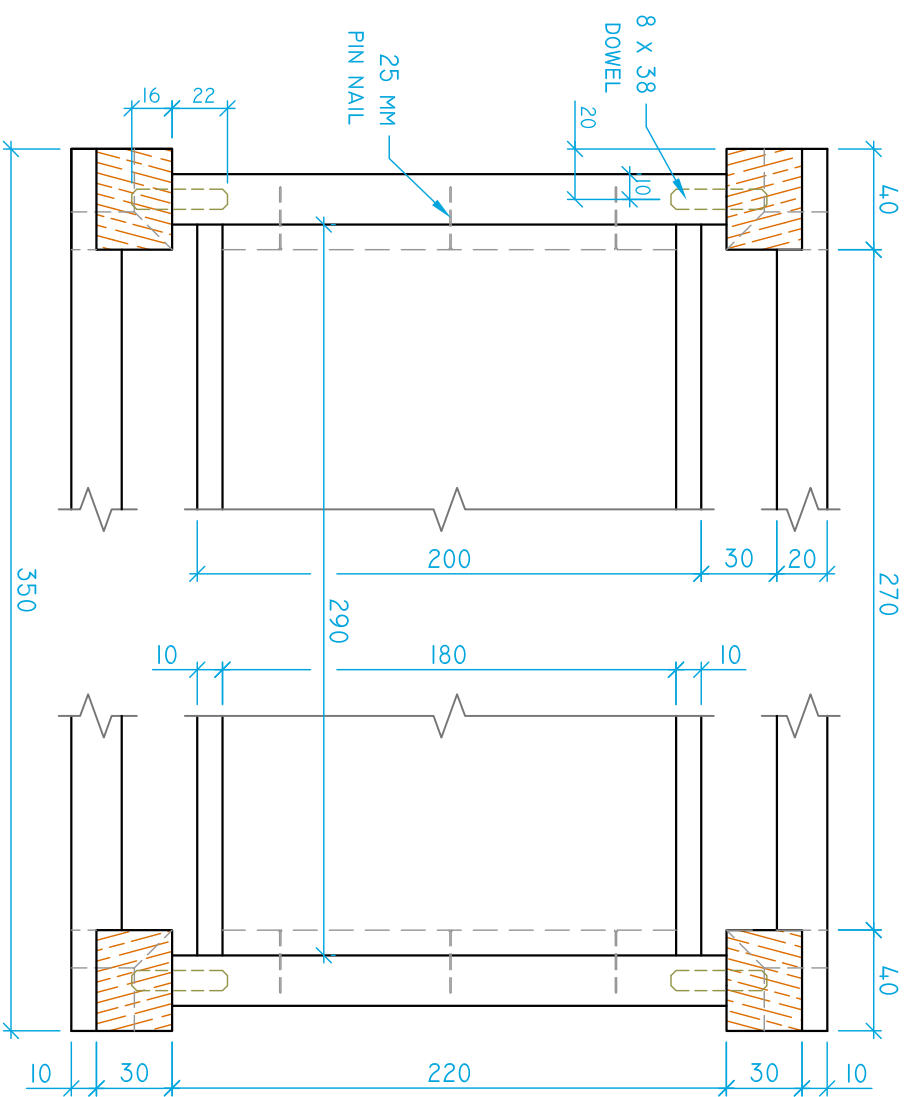
DATE:  
REV. 1 - MARCH 9, 2023

SCALE:  
AS NOTED

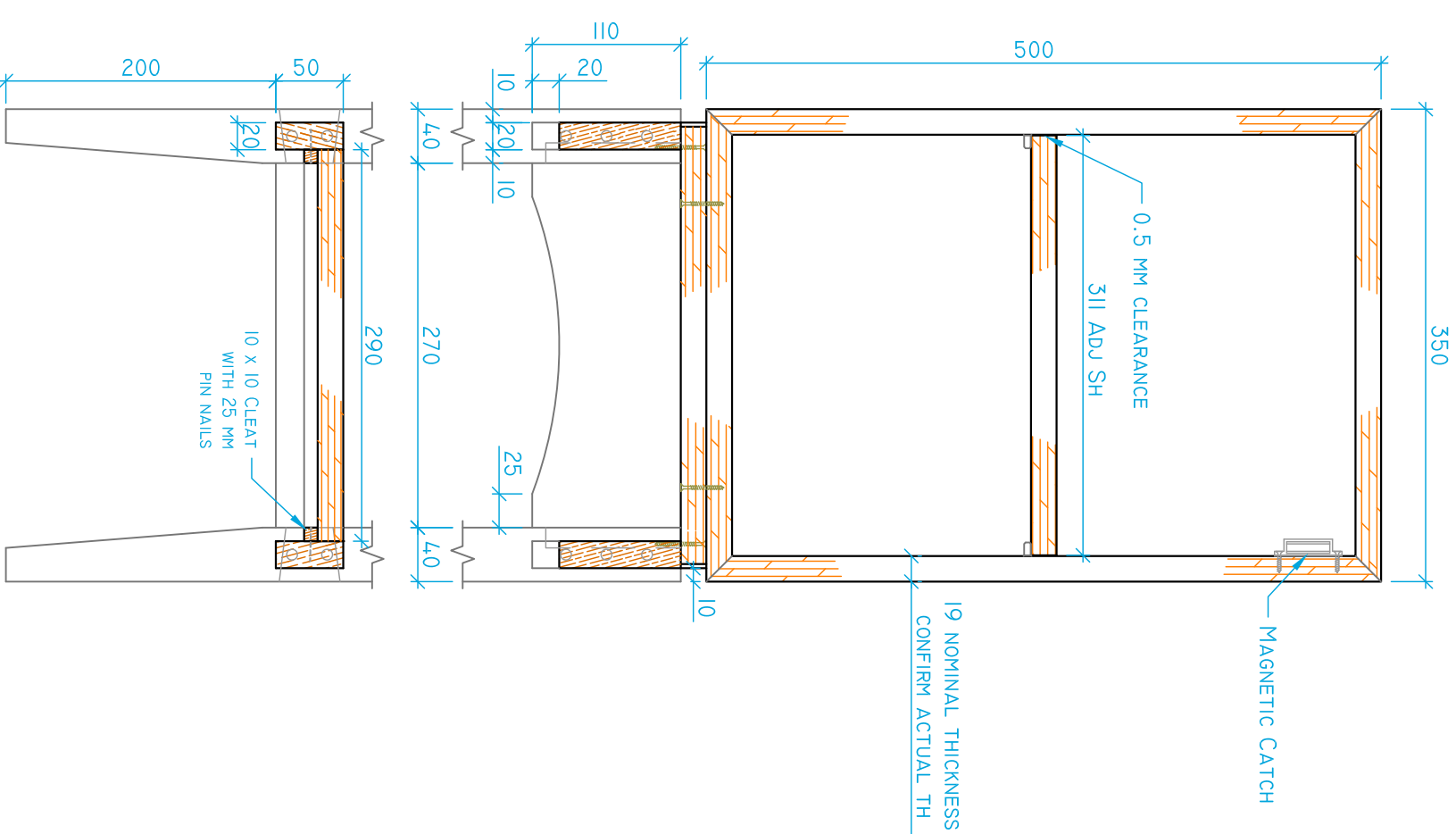
DRAWN BY:  
HB

SHEET:  
1 OF 4

REVISION 1 - MARCH 9, 2023, NOTE CHANGES FROM PREVIOUSLY POSTED DRAWINGS



SECTION C:C SCALE 1 : 3



SECTION D : D - SCALE 1 : 5



NOTES:

- ADJUSTABLE SHELF ON 5 MM SHELF PINS
- PLYWOOD MIDDLE DIVIDER (BETWEEN CASE AND STAND) SUPPLIED TO SIZE AND EDGED
- LOWER FRAME SHELF WITH 10 X 29 EDGING, SET ON 10 X 10 CLEATS PIN NAILED IN PLACE

PROJECT:

MITRED CASE WITH STAND

LEVEL:

HIGH SCHOOL

DRAWING DESCRIPTION

SECTION C:C  
SECTION D:D

DATE:

REV. 1 - MARCH 9, 2023

SCALE:

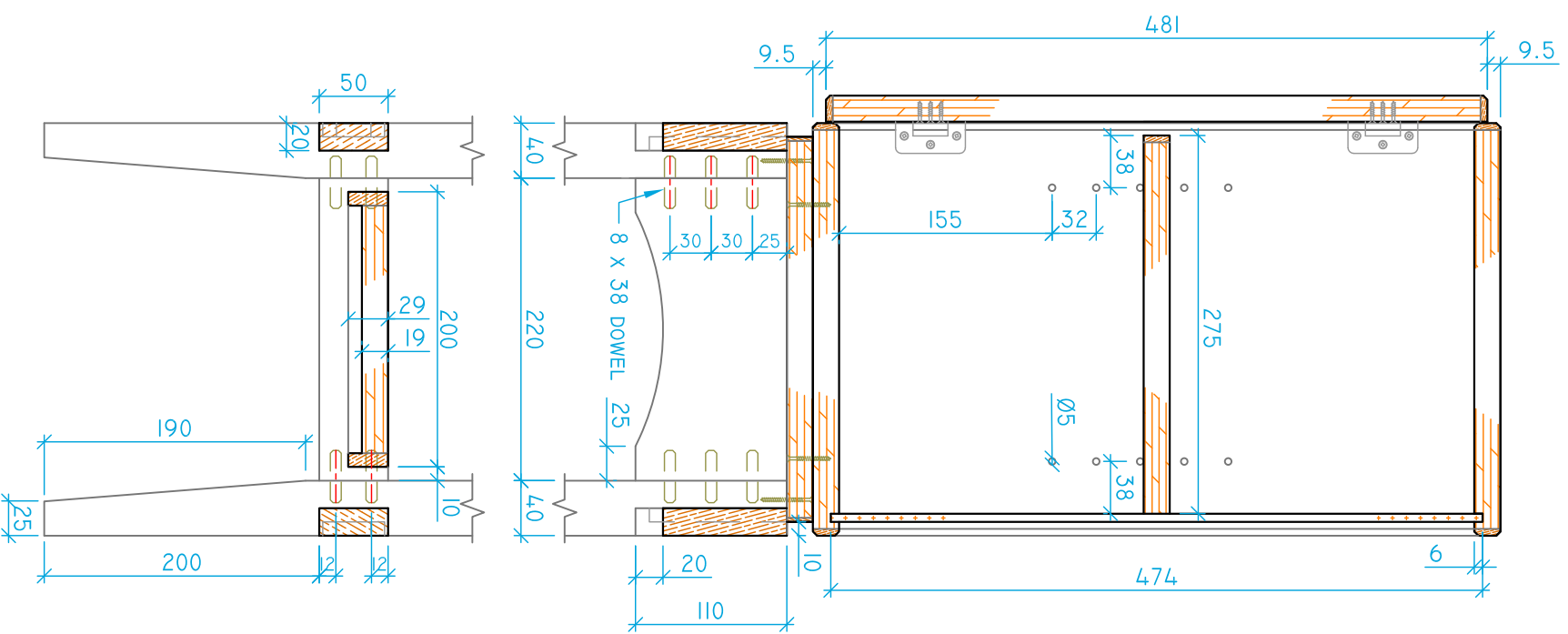
AS NOTED

DRAWN BY:

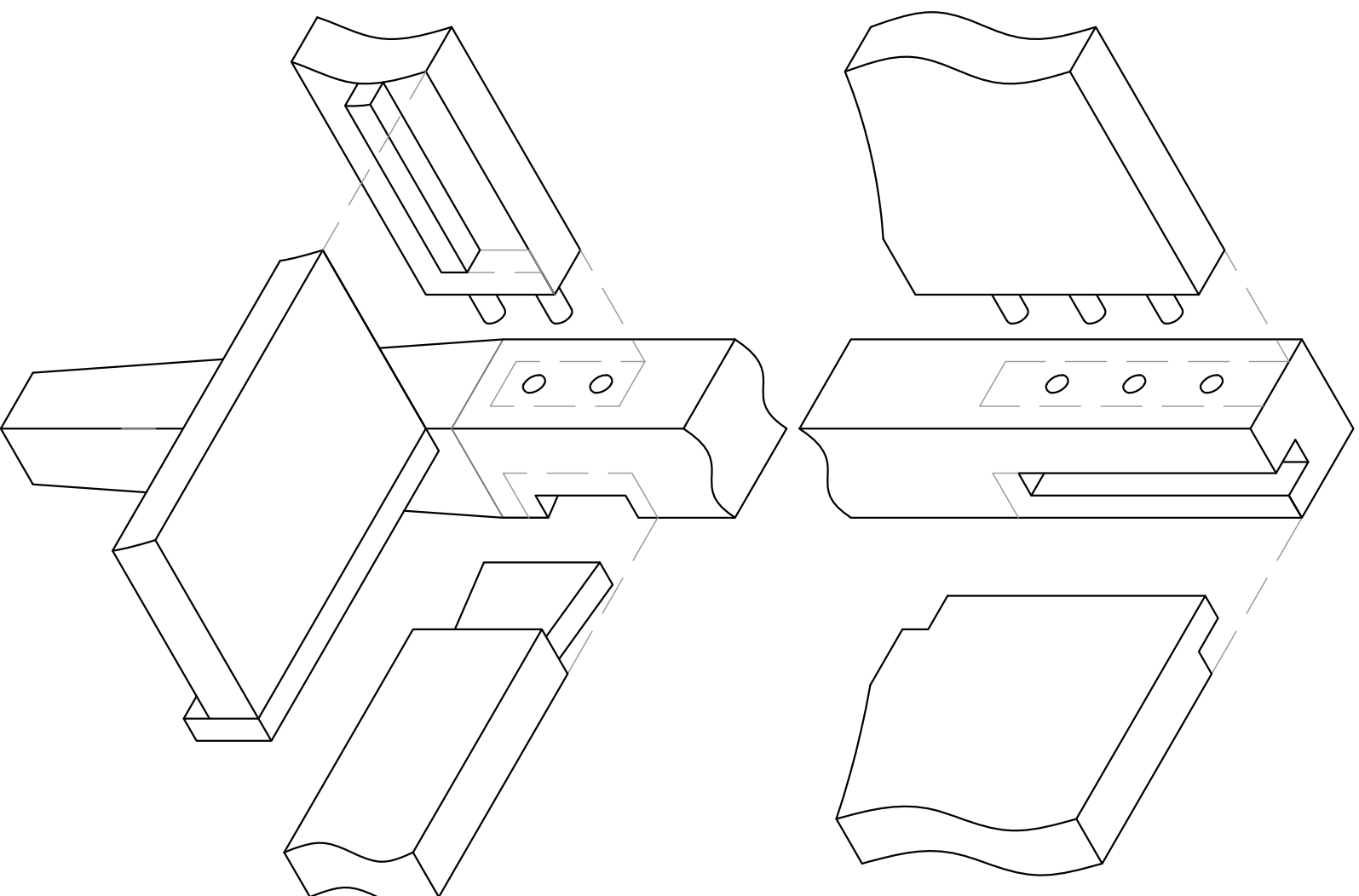
HB

SHEET:

2 OF 4

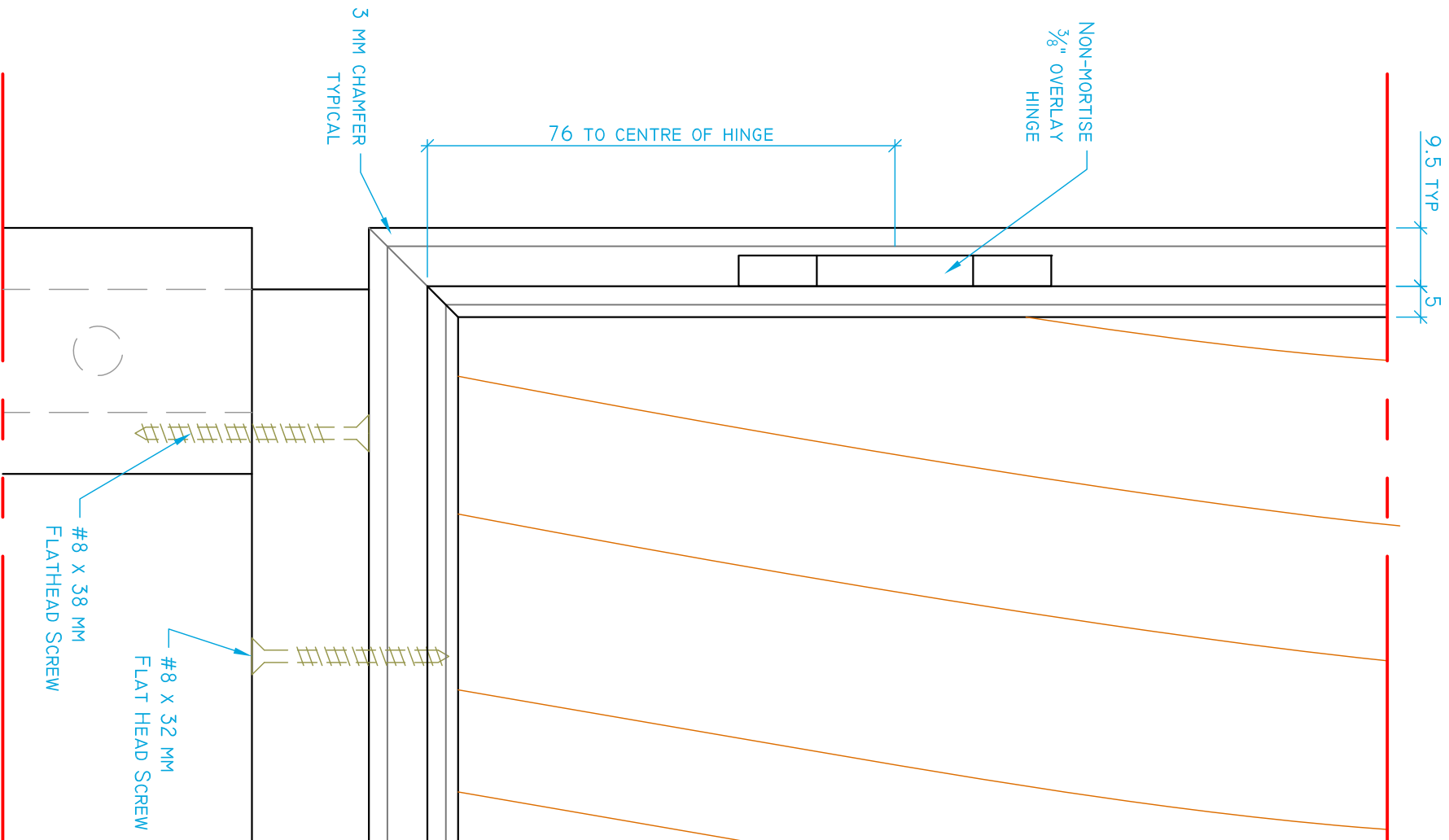


REVISION 1 - MARCH 9, 2023, NOTE CHANGES FROM PREVIOUSLY POSTED DRAWINGS

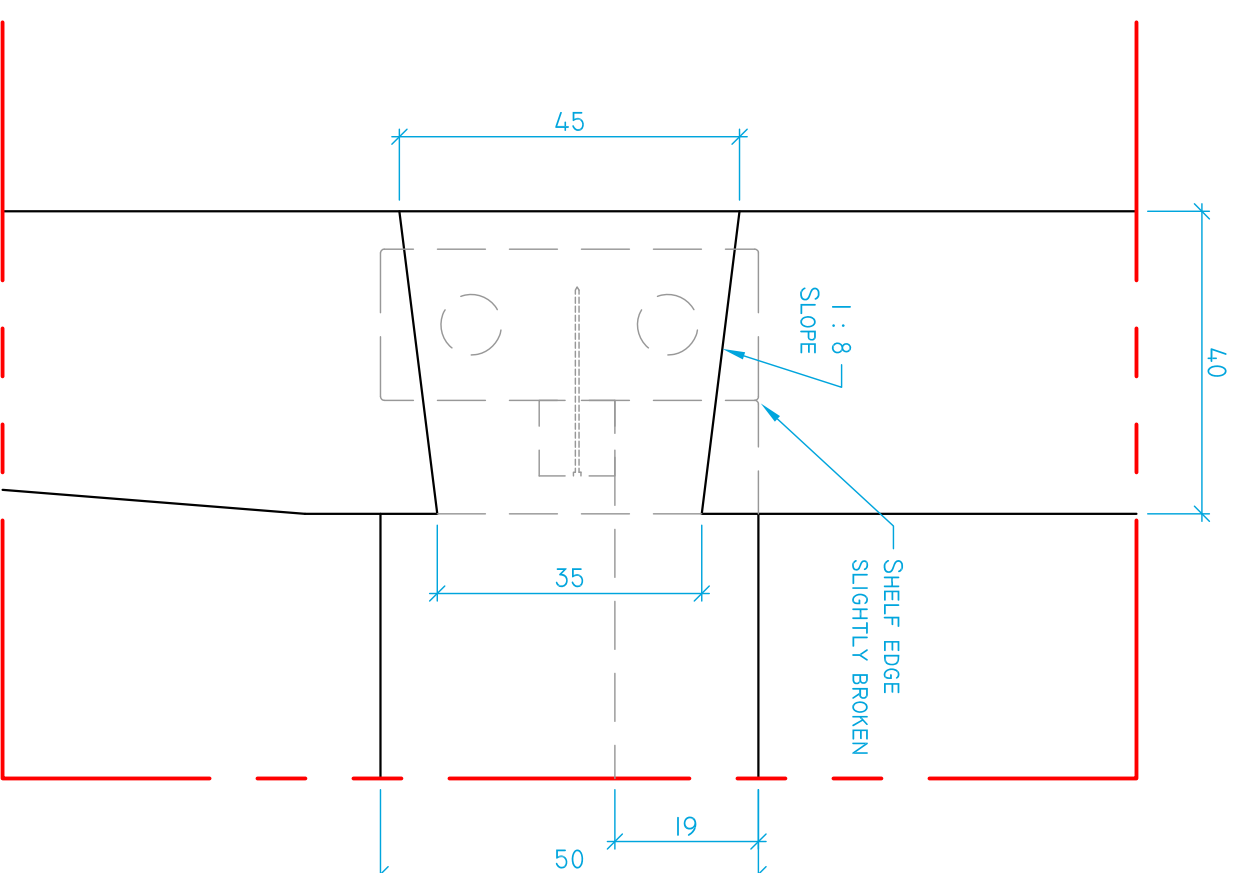


LOWER FRAME  
EXPLODED ISOMETRIC - SCALE 1:2.5

REVISION 1 - MARCH 9, 2023, NOTE CHANGES FROM PREVIOUSLY POSTED DRAWINGS



DETAIL 1 SCALE 1:1



DETAIL 2 - SCALE 1:1

NOTES:  
 - NON-MORTISE HINGE  
 LEE VALLEY #00H5822  
 - LAP DOVETAIL JOINERY ON LOWER FRAME - HAND TOOLS ONLY - WILL BE MARKED BEFORE AND AFTER ASSEMBLY

PROJECT:  
 MITRED CASE WITH STAND

LEVEL:  
 HIGH SCHOOL

DRAWING DESCRIPTION  
 DETAIL 1  
 DETAIL 2

DATE:  
 REV. 1 - MARCH 9, 2023

SCALE:  
 AS NOTED

DRAWN BY:  
 HB

SHEET:  
 4 OF 4