

4

3

2

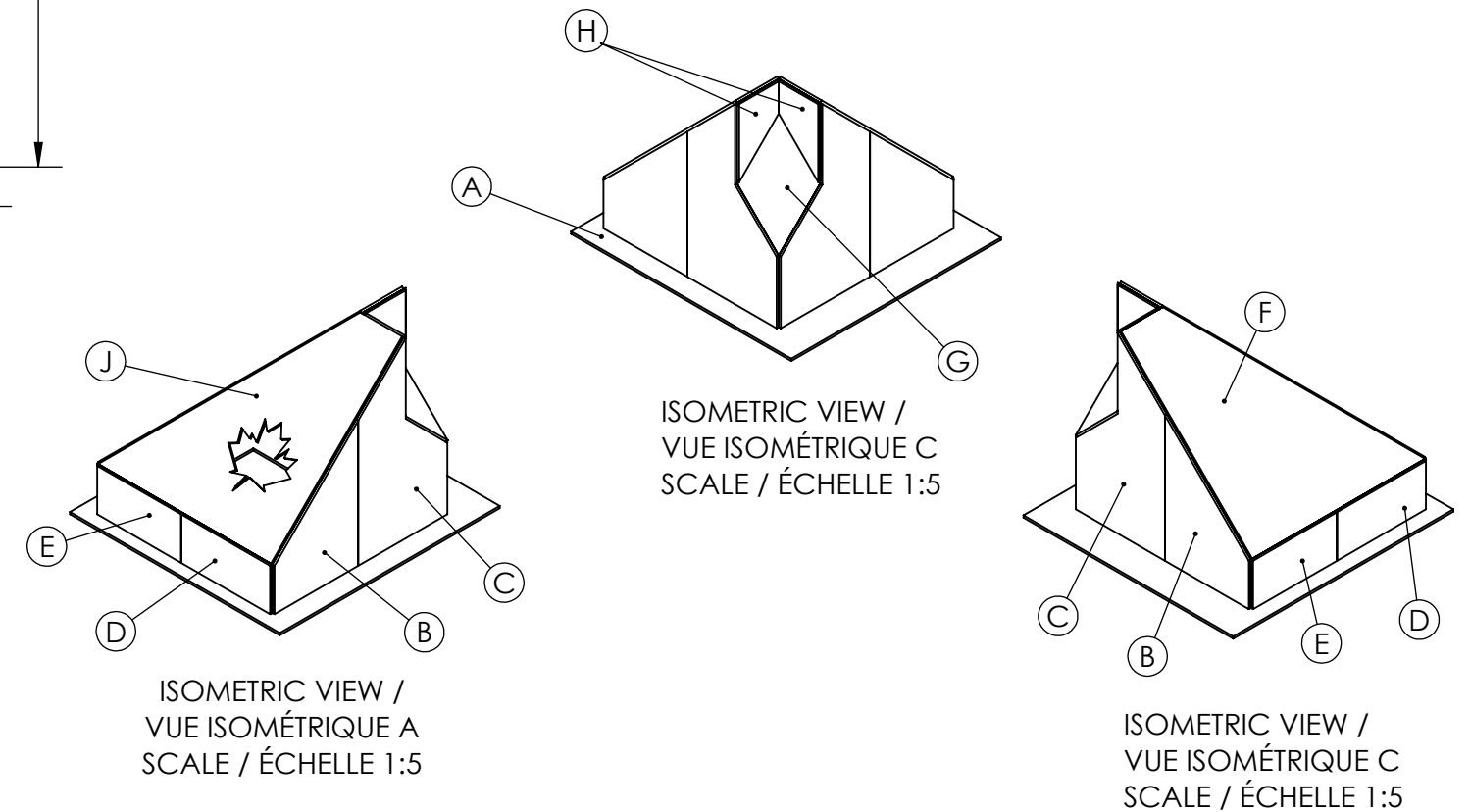
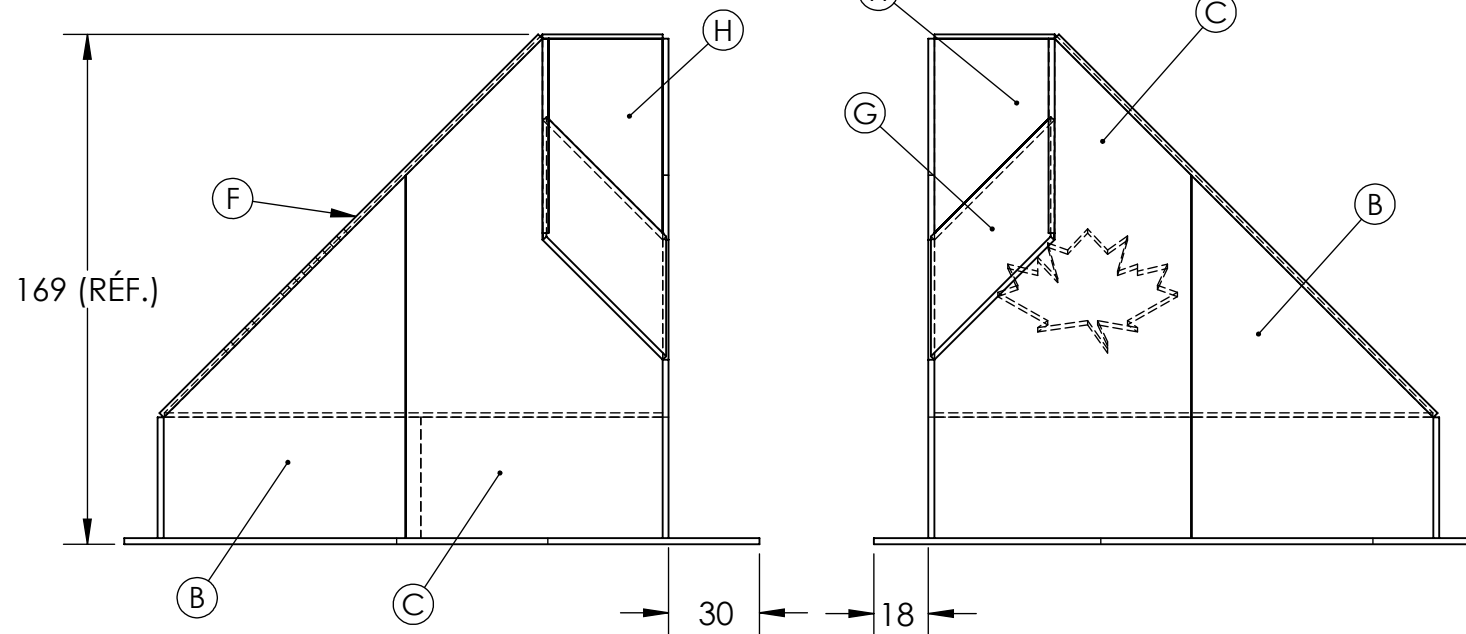
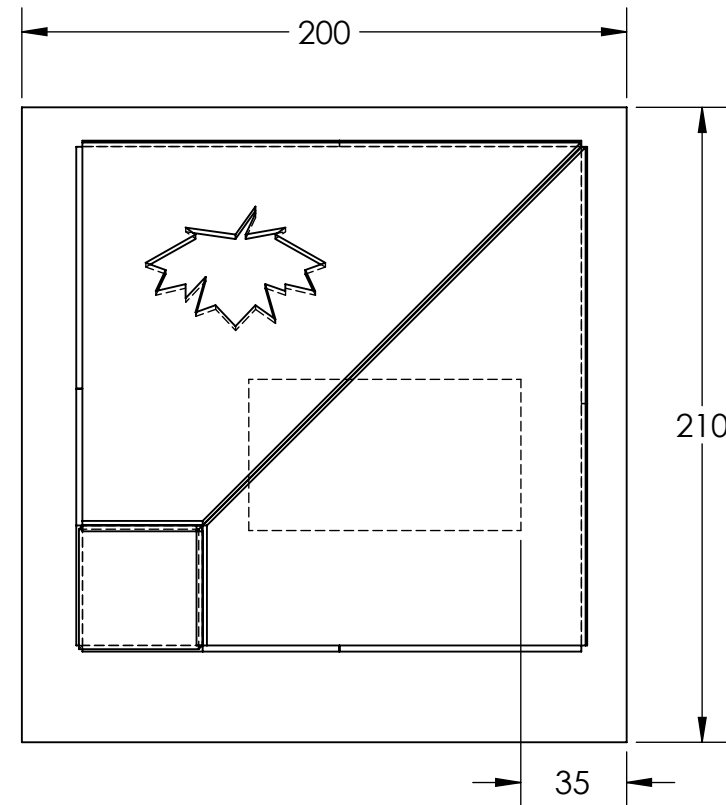
1

NOTE:
ALL DIMENSIONS IN MILLIMETERS / KILOGRAMS
ALL MATERIAL STAINLESS STEEL
SEE OTHER SHEETS FOR PARTS AND WELDING
DETAILS

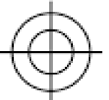
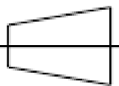
NOTE:
TOUTES LES DIMENSIONS EN MILLIMÈTRES /
KILOGRAMMES
TOUS LES MATÉRIAUX EN ACIER INOXYDABLE
VOIR LES AUTRES FICHES POUR LES PIÈCES ET LES
DÉTAILS DE SOUDURE

BILL OF MATERIALS/LISTE DES MATÉRIAUX

ITEM	QTY	T	W	L	Total Wt	Wt Units
A	1	2.00	200	210	0.66	kg
B	2	2.00	80	120	0.00	kg
C	2	2.00	85	165	0.44	kg
D	2	2.00	40	85	0.11	kg
E	2	2.00	40	80	0.10	kg
F	1	2.00	165	177	0.46	kg
G	1	2.00	56	97	0.09	kg
H	2	2.00	38	64	0.08	kg
J	1	2.00	165	177	0.46	kg
K	2	2.00	60	70	0.13	kg
L	1	THRD NIPPLE - SIZE TBD				kg
					2.52	kg



ALL DIMENSIONS IN MILLIMETERS/TOUTES LES DIMENSIONS SONT EN MILLIMÈTRES

TITLE: SCNC 2023 - POST-SECONDARY DAY 2 OCMT 2023 - POST-SECONDAIRE JOUR 2 MINT / MONNAIE - ASSEMBLY / ASSEMBLAGE				SHEET # NO. DE PAGE: 1 OF 3	SIZE/TAILLE: B
DWG. NO.: SCC2023-SP-2	REV.: 2	SCALE ÉCHELLE: 1:2.5	DESIGN BY: DRAWN BY: DATE:	T. PUNTON J. HYDE 2022-11-11	 



3

2

1

4

3

2

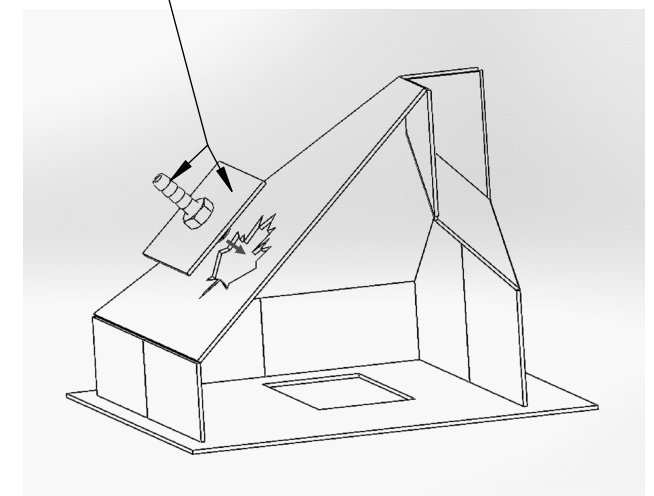
1

NOTE:

- ALL WELDING TO BE DONE WITH GTAW / TOUTES LES SOUDURES DOIVENT ÊTRE EFFECTUÉES AVEC GTAW
- TACK ENTIRE PROJECT PRIOR TO STARTING WELDS, YOU MUST OBTAIN A SIGN-OFF FROM THE TECHNICAL COMMITTEE AFTER FITTING AND BEFORE WELDING / POINTER TOUS LES COMPOSANTS ENSEMBLE AVANT DE COMMENCER LE SOUDAGE, VOUS DEVEZ OBTENIR L'APPROBATION DU COMITÉ TECHNIQUE APRÈS L'ASSEMBLAGE ET AVANT LE SOUDAGE
- ALL WELDING MUST BE DONE WITH BASE PLATE "A" SITTING FLAT ON TABLE / LA PLAQUE D'ASSISE « A » DOIT ÊTRE À PLAT SUR LA TABLE DURANT TOUTES LES ACTIVITÉS DE SOUDURE
- NO AUTOGENOUS WELDS ALLOWED / AUCUNE SOUDURE AUTOGÈNE AUTORISÉE
- NO REWELDING OR REMELTING / AUCUNE RESOUDURE OU REFONTE
- NO ALTERING JOINTS / PAS DE JOINTS MODIFIÉS
- NO POST-WELD CLEANING ALLOWED / AUCUN NETTOYAGE APRÈS SOUDURE AUTORISÉ

ITEMS A AND F, TYP. / ÉLÉMENTS A ET F, TYPIQUES,

NO WELD ON PURGE PLATE (K)
OR PURGE NIPPLE (L) / AUCUNE SOUDURE SUR LA
PLAQUE (K) OU LE MAMELON DE PURGE (L)



VIEW E / VUE E
PURGE PLATE ASSEMBLY DETAILS,
ITEM B & C REMOVED /
DÉTAILS DE L'ASSEMBLAGE
DE LA PLAQUE DE PURGE,
ÉLÉMENT B & C SUPPRIMÉ

SECTION D-D
SCALE 1 : 2.5

ALL DIMENSIONS IN MILLIMETERS/TOUTES LES DIMENSIONS SONT EN MILLIMÈTRES



TITLE: SCNC 2023 - POST-SECONDARY DAY 2 OCMT 2023 - POST-SECONDAIRE JOUR 2 MINT / MONNAIE - WELDS / SOUDURES				SHEET # NO. DE PAGE: 2 OF 3	SIZE/TAILLE: B
DWG. NO.: SCC2023-SP-2	REV.: 2	SCALE ÉCHELLE: 1:2.5	DESIGN BY: T. PUNTON	DRAWN BY: J. HYDE	
			DATE: 2022-11-11		

4

3

2

1

4

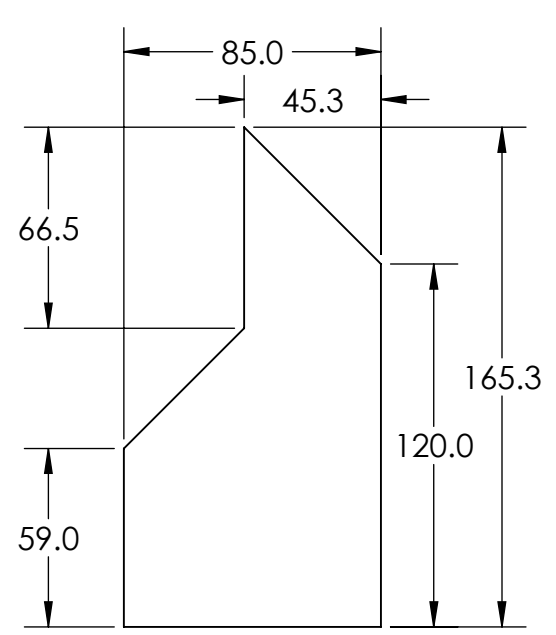
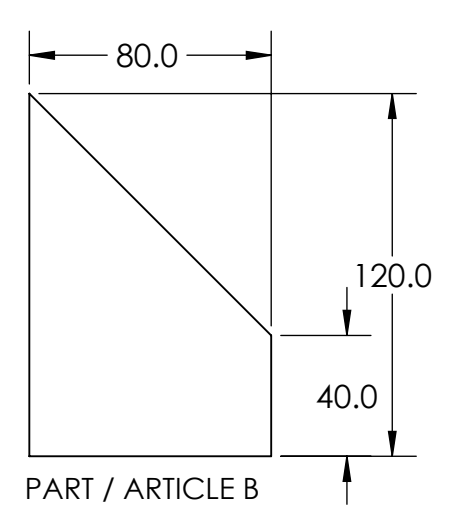
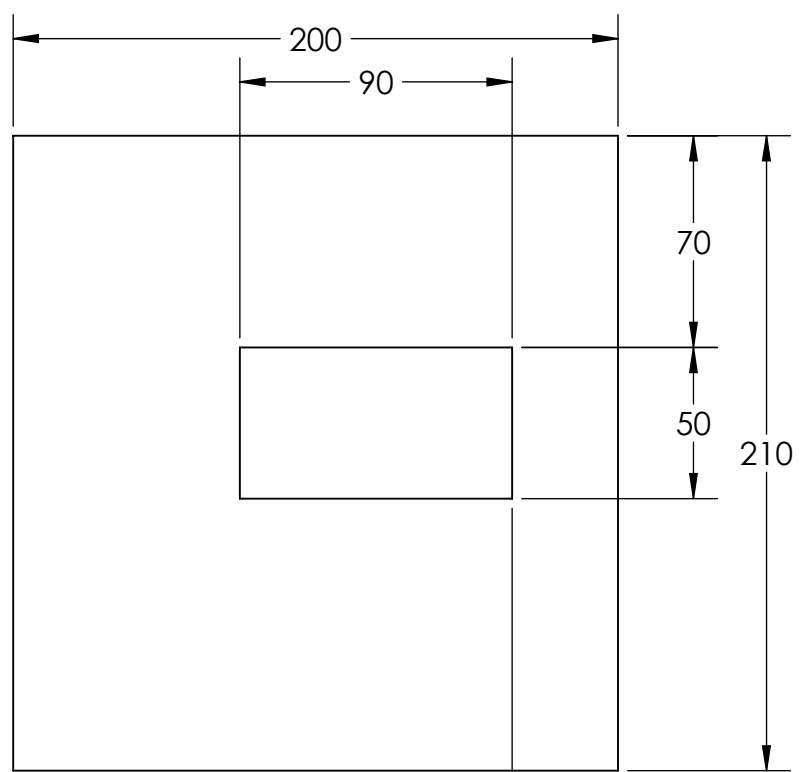
3

2

1

BILL OF MATERIALS

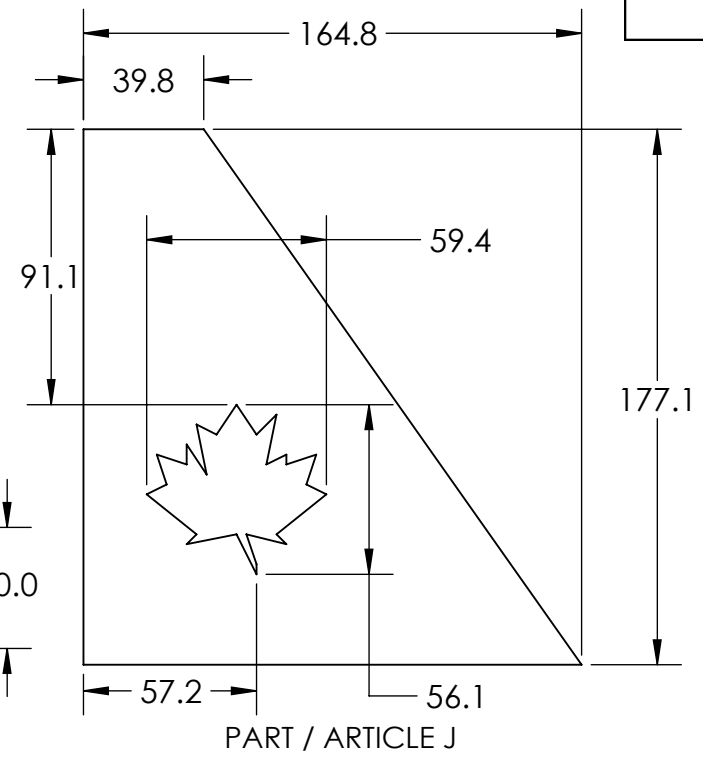
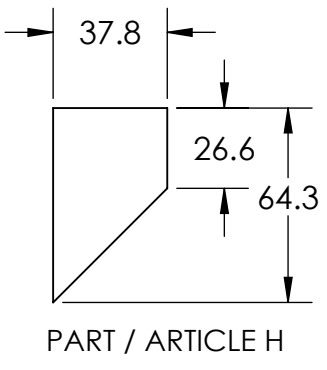
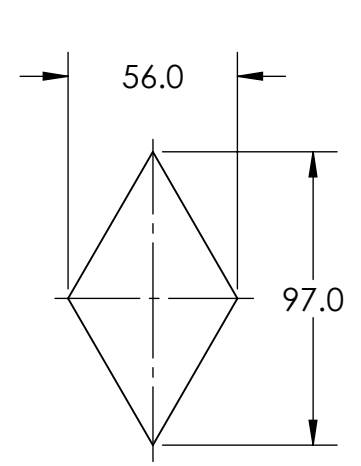
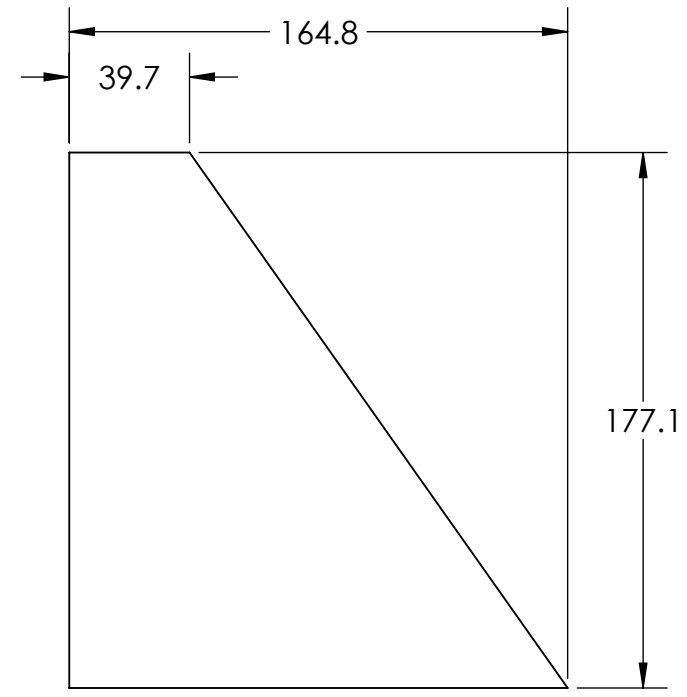
ITEM	QTY	T	W	L	Total Wt	Wt Units
A	1	2.00	200	210	0.66	kg
B	2	2.00	80	120	0.00	kg
C	2	2.00	85	165	0.44	kg
D	2	2.00	40	85	0.11	kg
E	2	2.00	40	80	0.10	kg
F	1	2.00	165	177	0.46	kg
G	1	2.00	56	97	0.09	kg
H	2	2.00	38	64	0.08	kg
J	1	2.00	165	177	0.46	kg
K	1	2.00	60	70	0.07	kg
L	1	NIPPLE / LE MAMELON				
					2.45	kg



PART / ARTICLE A

PART / ARTICLE B

PART / ARTICLE C

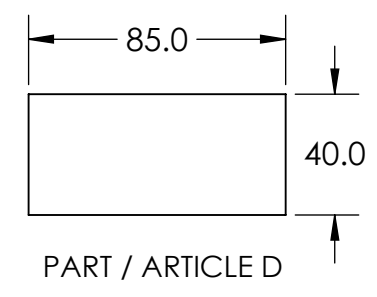


PART / ARTICLE F

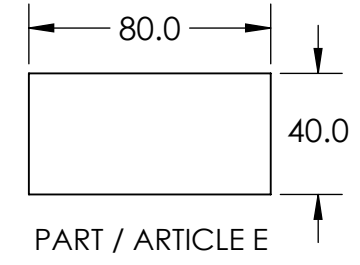
PART / ARTICLE G

PART / ARTICLE H

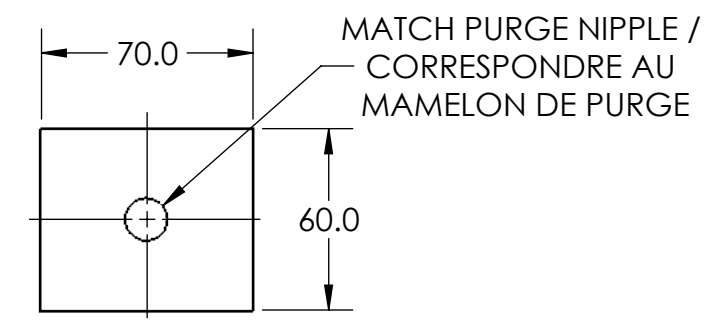
PART / ARTICLE J



PART / ARTICLE D



PART / ARTICLE E

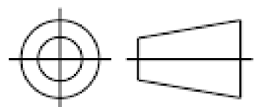


PART / ARTICLE K
(PURGE PLATE /
PLAQUE DE PURGE)

ALL DIMENSIONS IN MILLIMETERS/TOUTES LES DIMENSIONS SONT EN MILLIMÈTRES



TITLE: SCNC 2023 - POST-SECONDARY DAY 2 OCMT 2023 - POST-SECONDAIRE JOUR 2 MINT / MONNAIE - PARTS / LES PIÈCES			SHEET # NO. DE PAGE: 3 OF 3	SIZE/TAILLE: B
DWG. NO.: SCC2023-SP-2	REV.: 2	SCALE ÉCHELLE: 1:2.5	DESIGN BY: DRAWN BY: DATE:	T. PUNTON J. HYDE 2022-11-11



4

3

2

1