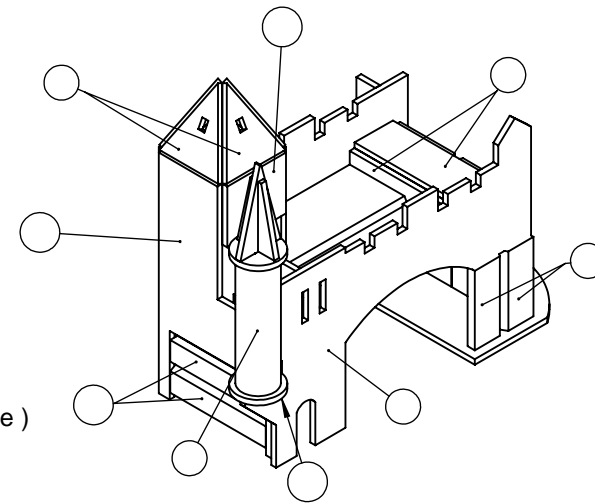
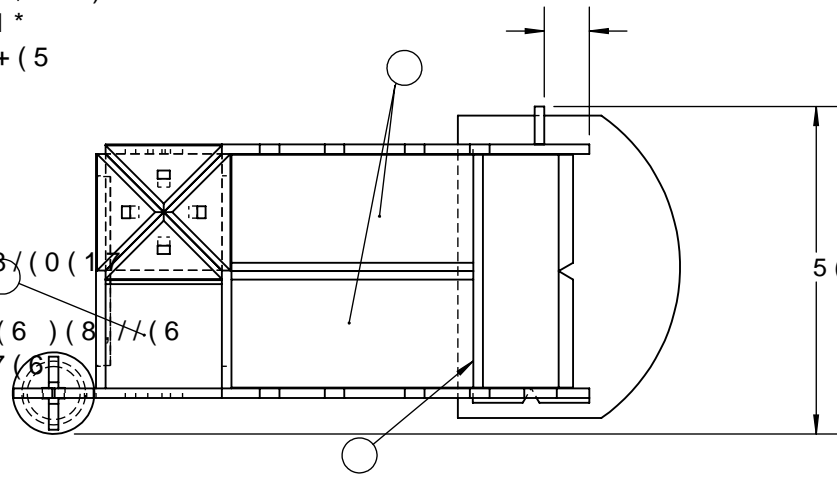
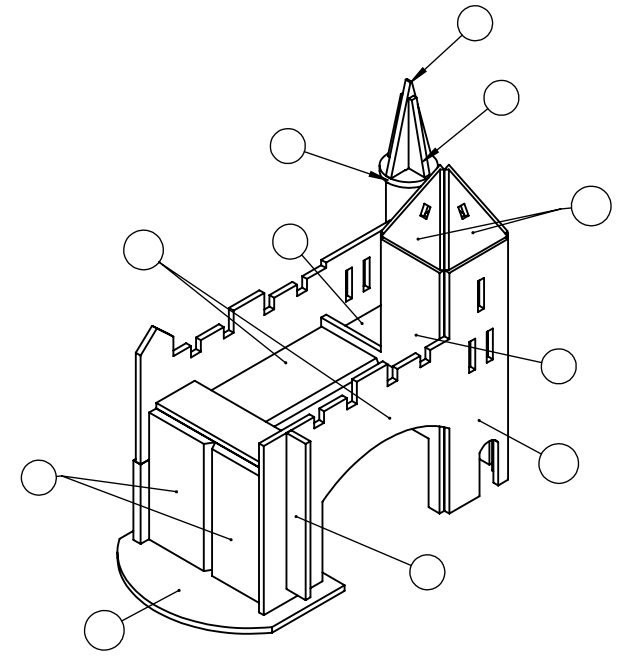


127(
 † \$// 0\$7(5,\$/ 0,/ ' 67((/ 3/\$7(
 † 7\$&. :(/' (17,5(\$66(0%/< \$77\$,1 67\$03)520
 &200,77((\$1' 21/< 7+(1 %(*,1 :(/,1*
 † 5(\$' \$// 127(6 21 \$// 6+((76)25)87+(5
 ,03257\$17 ,16758&7,216

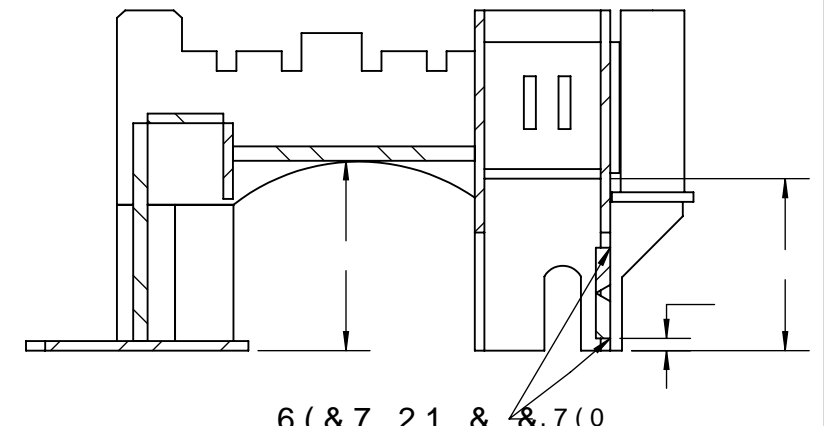
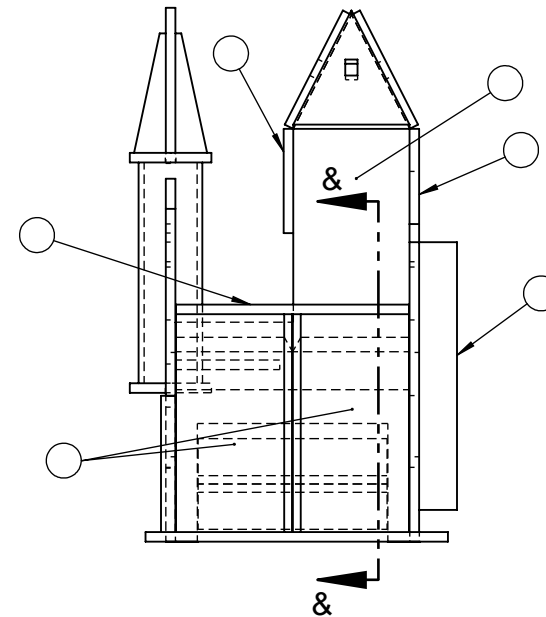
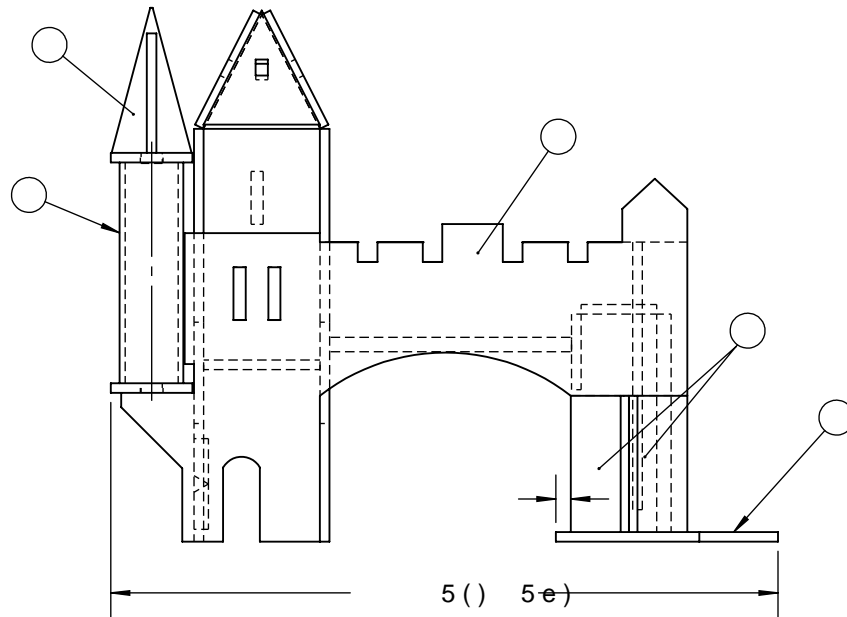
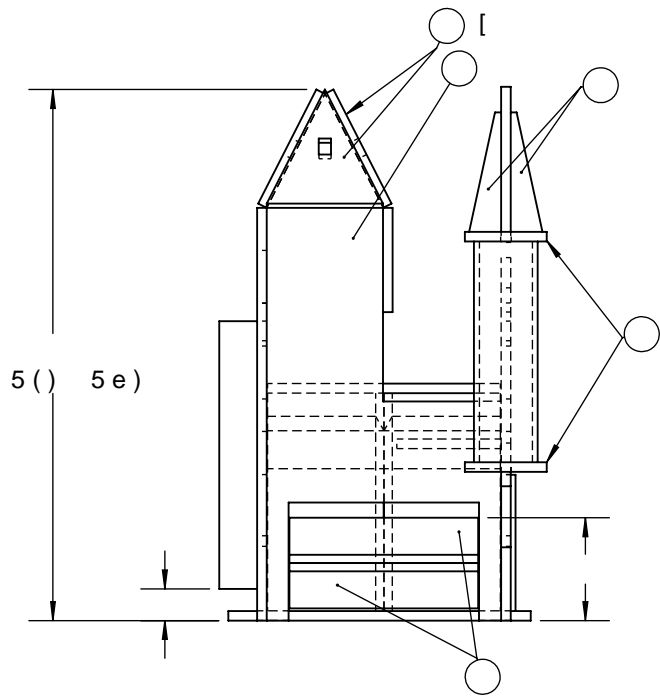
5(0\$548(6
 † 0\$7e5,\$8 7Ñ/((1 \$&,(5 '28; 7287
 628' (= 3\$5 32,17\$*(7287 / \$66(0%/\$*(
 † 2%7(1(= /(32,1d21 '(&20,7e (7 6(8/(0(1
 (168,7(&200(1&(= /(628'\$*(
 † /,6(= 7287(6 /(6 127(6 685 7287(6 /(6)(8) // (6
 &21&(51\$17 /(6 ,16758&7,216 ,03257\$17



,620(75,& 9,(: \$
 98(,620e75,48(\$
 6&\$/(e&+(/(



,620(75,& 9,(: %
 98(,620e75,48(%
 6&\$/(e&+(/(



\$// ',0(16,216 ,1 0, //,0(7(56 7287(6 /(6 ',0(16,216 6217 (1 0

7,7/(6 & 1 & 2 & 0 7	6 (& 21 '\$5 < '\$ < 6 (& 21 '\$,5 (- 285 3257(6\$,17 /28,6	6+((7 12 '(3\$*(2)	6,=(7\$,/(%
' : * 12 6 & 1 & 6	5(9	6 & \$/(e & + (/ (' 5 \$: 1 % < - + < '(' \$ 7 (

4

3

2

1

ER49S-6
DOWNHAND / PROGRESSION
EN VERTICAL DESCENDANT
TYP.

ER49S-6

E4918
27-75

E4310 ROOT/ RACINE
E4918 CAP / REMPLISSAGE

ER49S-6
ROOT DOWNHAND
/ RACINE DESCENDANT

B

B

SECTION E-E

TACK ONLY/
TACK SEULEMENT

E4918
DOWNHAND / PROGRESSION
EN VERTICAL DESCENDANT
TYP.

E4918
TYP.

ER49S-6

E4918

E4918

ER49S-6

E4918

E4918

E4918

6x9

ER49S-6

SECTION D-D

E4310 ROOT/ RACINE
E4918 CAP / REMPLISSAGE

NOTE

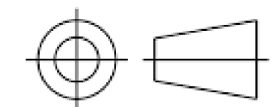
1. ALL WELDING MUST BE DONE WITH BASE PLATE "A" SITTING FLAT ON TABLE
2. YOU MUST OBTAIN A SIGN-OFF FROM THE TECHNICAL COMMITTEE AFTER FITTING AND BEFORE WELDING
3. GAP AND ROOT FACE FOR PREPARED VEE GROOVE WELDS --> YOUR CHOICE, SEE PAGE 3 FOR GROOVE PREPARATION DETAILS
4. ALL VERTICAL WELDING TO BE DONE IN UPHILL PROGRESSION, UNLESS NOTED

REMARQUE:

1. LA PLAQUE D'ASSISE « A » DOIT ÊTRE À PLAT SUR LA TABLE DURANT TOUTES LES ACTIVITÉS DE SOUDURE
2. VOUS DEVEZ OBTENIR L'APPROBATION DU COMITÉ TECHNIQUE APRÈS L'ASSEMBLAGE ET AVANT LE SOUDAGE
3. ESPACEMENT ET ECARTEMENT POUR LES SOUDURES EN V --> À VOTRE DISCRÉTION, VOIR PAGE 3 POUR LES DÉTAILS DE LA PRÉPARATION POUR LES SOUDURES EN V
4. TOUTES LES SOUDURES VERTICALES DOIVENT ÊTRE EXÉCUTÉES EN MONTANT, SAUF NOTE

ALL DIMENSIONS IN MILLIMETERS/TOUTES LES DIMENSIONS SONT EN MILLIMÈTRES

TITLE: PSCC 2024 - SECONDARY DAY 1 PORTE SAINT-LOUIS		SHEET # NO. DE PAGE: 2 OF 3	SIZE/TAILLE: B
DWG. NO.: SCNC24-S1	REV.: 2	SCALE ÉCHELLE: 1:5	DRAWN BY: J. HYDE DATE: 2023-10-17

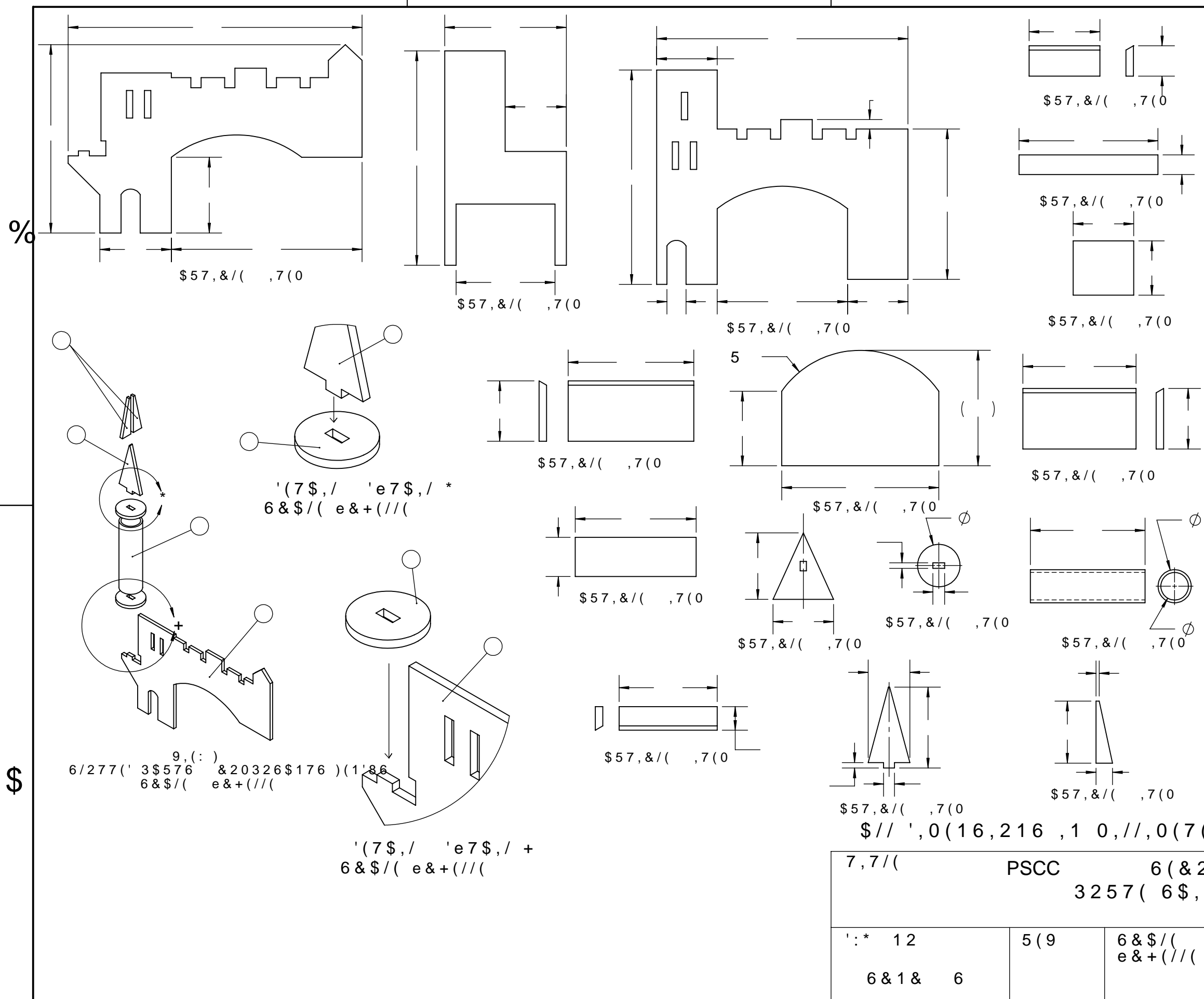


4

3

2

1



7(0	57, &/ ('(6&5,37,21	47<
3	[[
3	[[
3	[[
3	[[
3	[[
3	[[
3	[[
3	[[
3	[[
3	[[
3,3(67'	[2'	[
3	[[
3	[[
3	[[

727\$/ (67,0\$7(' :(*+7 %())25(:(/',1*
 32,'6 727\$/ (67,0e \$9\$17 628'\$*(

35(3\$5(' *5229(' ,0(16,216
 ',0(16,216 '(6 5\$,185(6 35e3\$5e(6
 \$// %(9(/ \$1' 9((35(3\$5\$7,216 \$6)2//2:6
 35e3\$5(5 7287(6 /(6 628'85(6 (1 9 (7 (1 %,6(\$
 &(&

5 DQGDUH SUHSDUHG WR WKH SUHIHUHQFH RI W
 7KH GLPHQVLRQ IRU WKH SODWHV VKRZQ LV WF
 DQ\ URRW JDS PXVW EH DFFRPRGDWHG LG RYH
 5 HWRQW SUpSDUpV VHQRQ OHV SUpIpUHQFHV
 FRQFXUUHQWH /HV GLPHQVLRQV GHV SODTXHV
 FRPSWH G·XQ UHERUG DPLQFL HW WRXW HVSDP
 rWUH SULV HQ FRPSWH GDQV O·HQVHPEOH GH
 G·DVVHPEODJH

6/277(' 3\$576 &20326\$176)(1'86
 6&\$/(e&+(/(

'(7\$,/ 'e7\$,/ *
 6&\$/(e&+(/(

'(7\$,/ 'e7\$,/ +
 6&\$/(e&+(/(

7,7/(PSCC	6(&21'\$5< '\$<	6+((7	6,=(7\$,/(
		3257(6\$,17 /28,6	12 '(3\$*(
			2)	%
' : * 12	5(9	6&\$/(e&+(/('5\$:1 %< - +<'	
6 & 1 & 6		'\$7(