

NOTES:

- TOP
 - VENEERED CORE WITH 50 MM SOLID MITRED EDGING
- UPPER CASE
 - MITRED PLYWOOD WITH 5 MM SOLID TOP EDGE
 - KEYS ADDED TO CORNERS
- LOWER STAND
 - "X" FRAME LEGS WITH CROSS LAP JOINT
 - CURVED STRETCHER WITH TUSKED THROUGH TENON

PROJECT:

MITRED CASE WITH STAND

LEVEL:

POST SECONDARY

DRAWING DESCRIPTION

ORTHO VIEWS, DETAILS 1 & 2

DATE:

FEB. 28, 2025

SCALE:

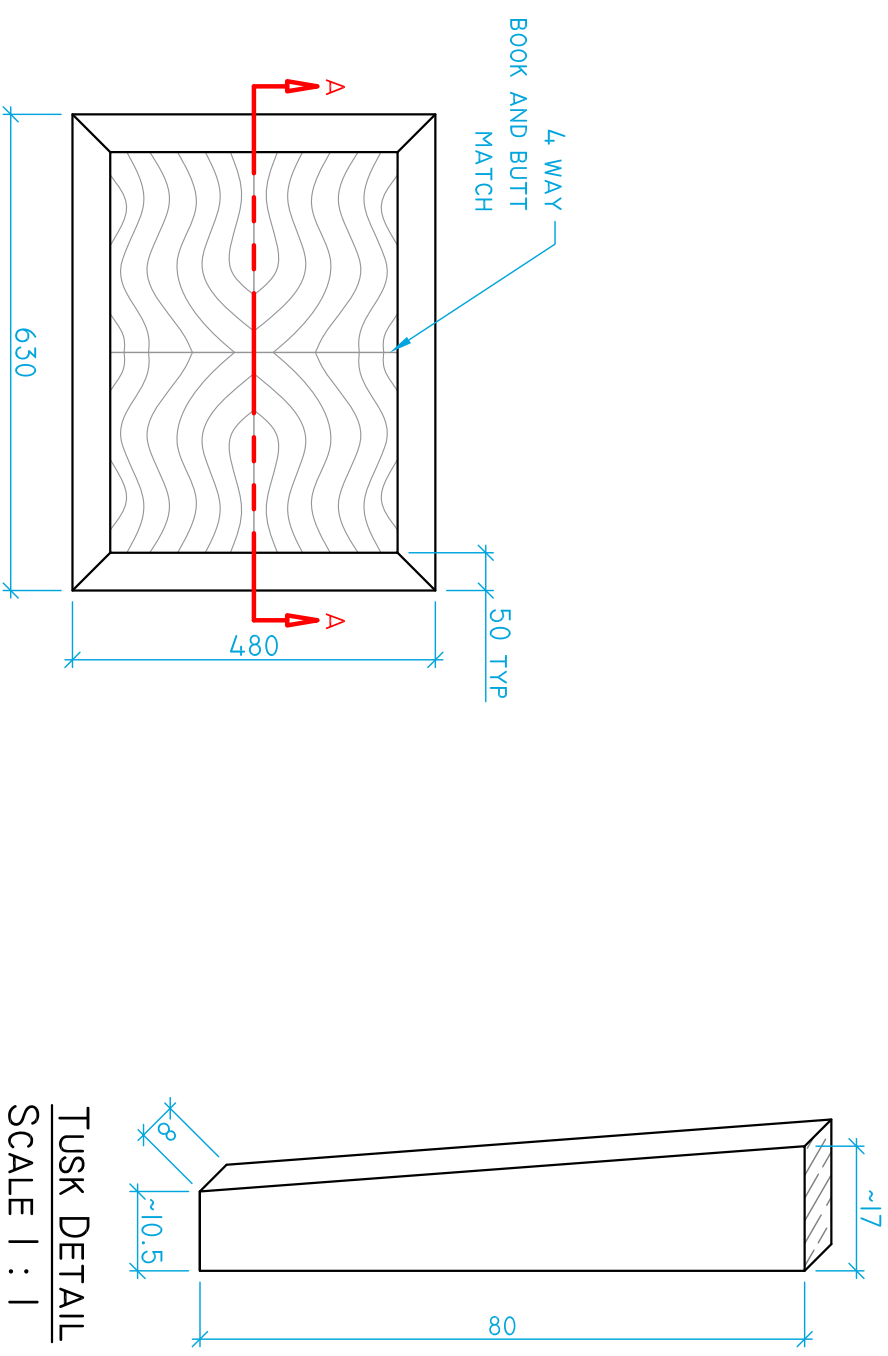
AS NOTED

DRAWN BY:

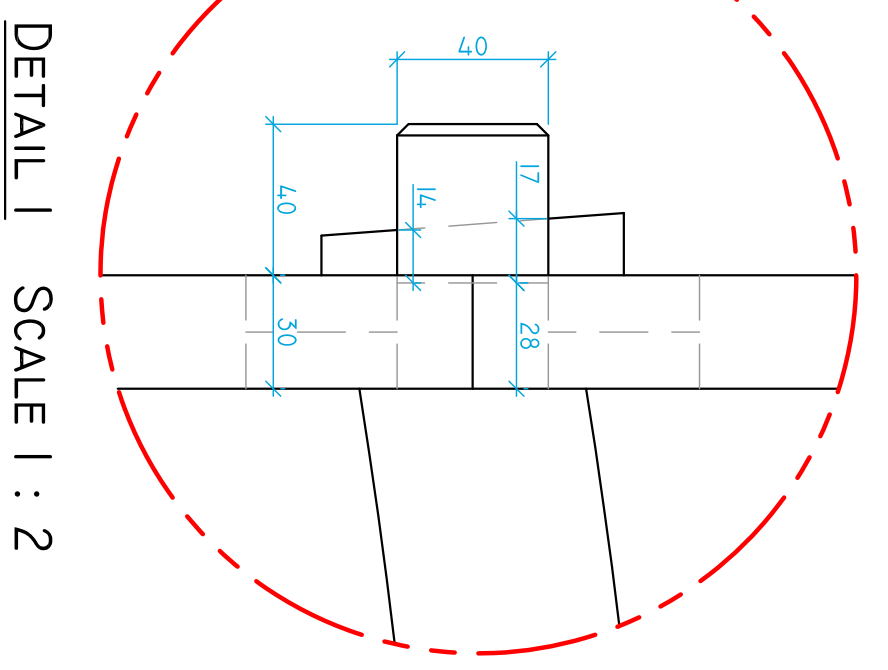
HB

SHEET:

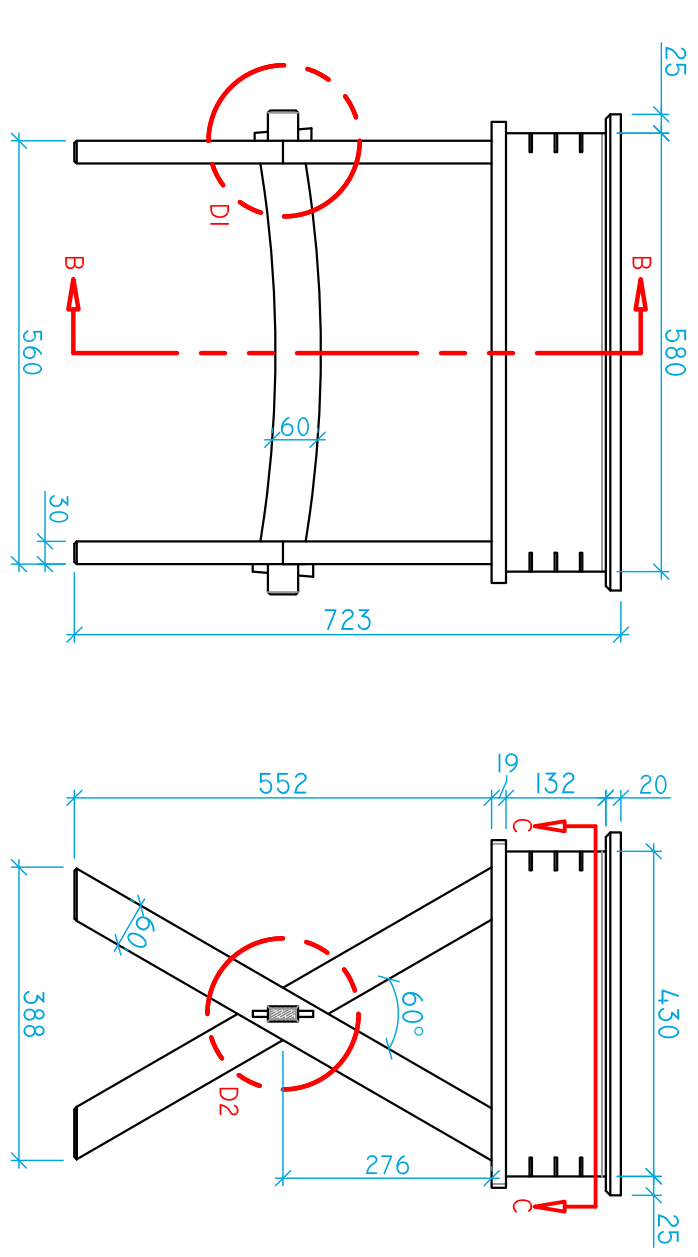
1 OF 3



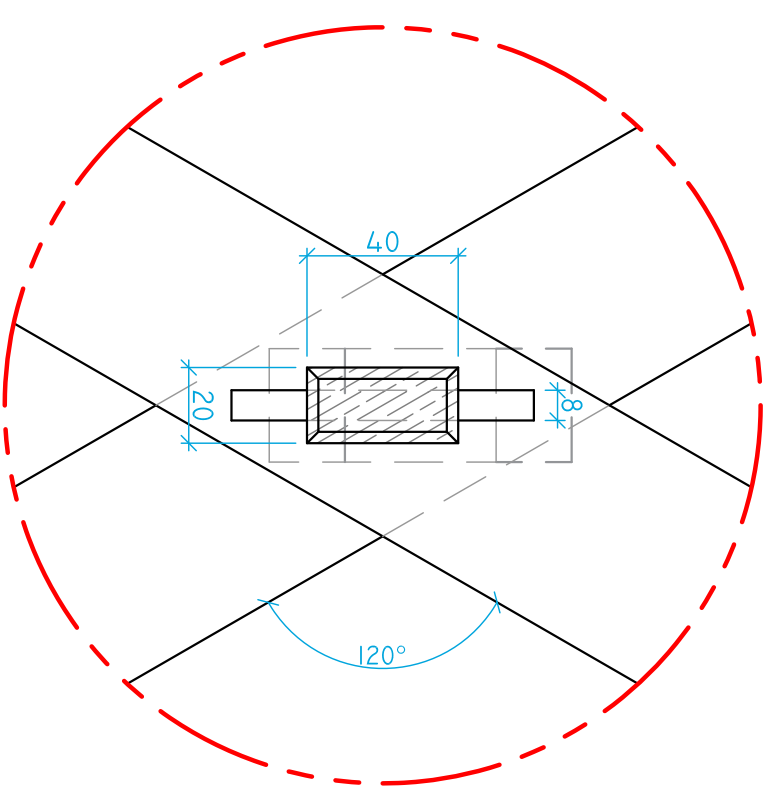
TUSK DETAIL
SCALE 1 : 1



DETAIL 1
SCALE 1 : 2



ORTHO VIEWS
SCALE 1:10



DETAIL 2
SCALE 1:2

NOTE:
DRAWINGS FOR TRAINING PURPOSES ONLY
COMPETITION PROJECT MAY HAVE UP TO 30% CHANGE

NOTES:
 - LID HINGED ON LONG SIDE
 NON-MORTISE LID HINGE
 - 12 MM BOTTOM IN 10 X 12
 RABBIT
 - DOVETAIL TRAY SLIDES ON
 12 MM SOLID CLEATS
 - PLYWOOD SUB TOP
 (BETWEEN CASE AND STAND)
 SUPPLIED TO SIZE
 - CROSS LAP JOINERY ON LEG
 FRAMES
 - 6MM MDF PANEL WILL BE
 SUPPLIED FOR FULL-SCALE
 LAYOUT

PROJECT:

MITRED CASE
 WITH STAND

LEVEL:

POST
 SECONDARY

DRAWING DESCRIPTION

SECTION A:A,
 SECTION B:B

DATE:

FEB. 28, 2025

SCALE:

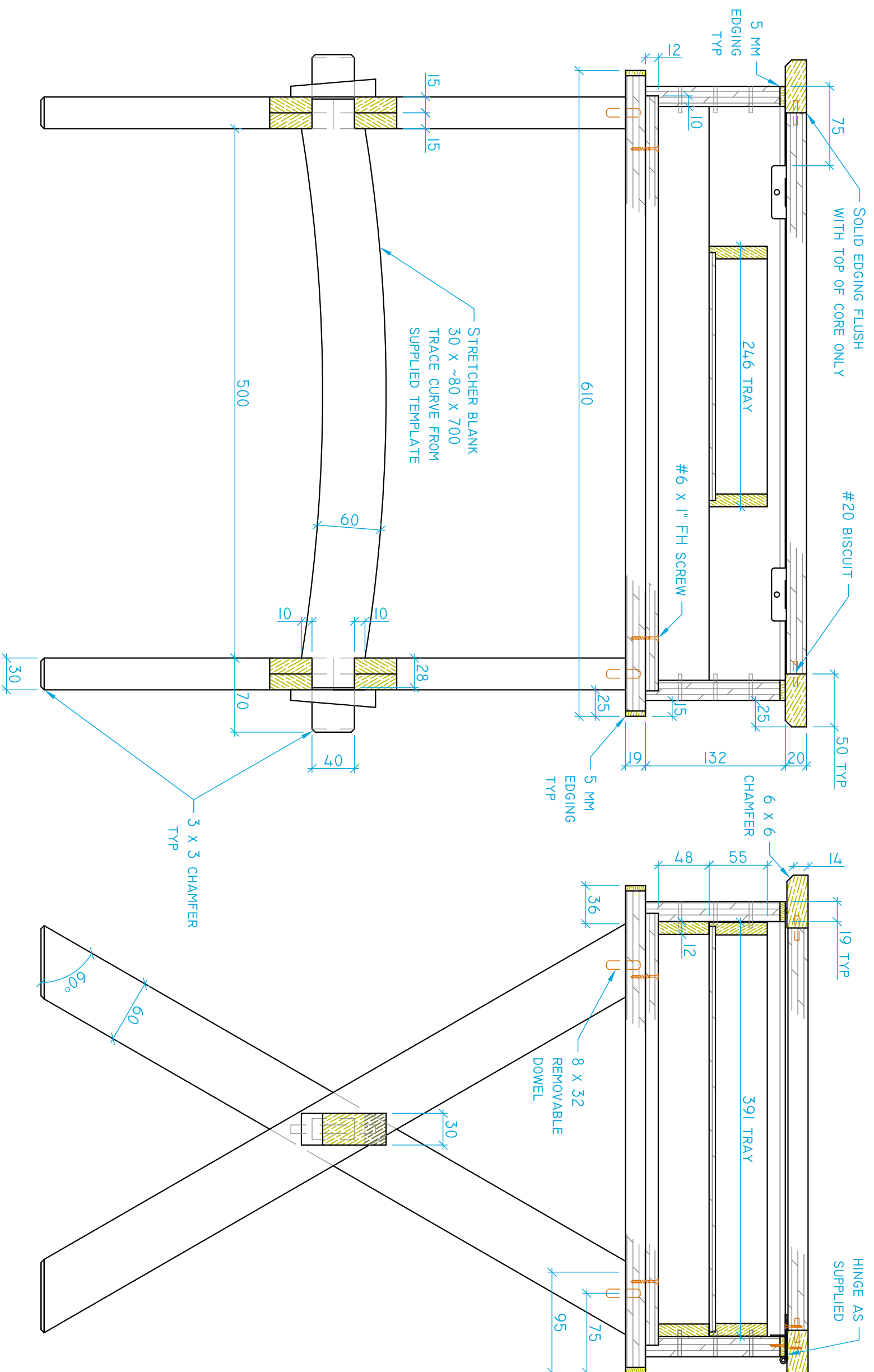
AS NOTED

DRAWN BY:

HB

SHEET:

2 OF 3

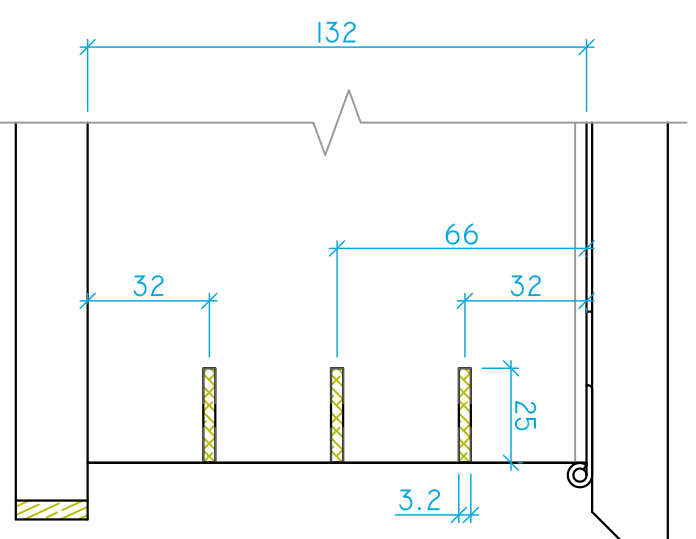
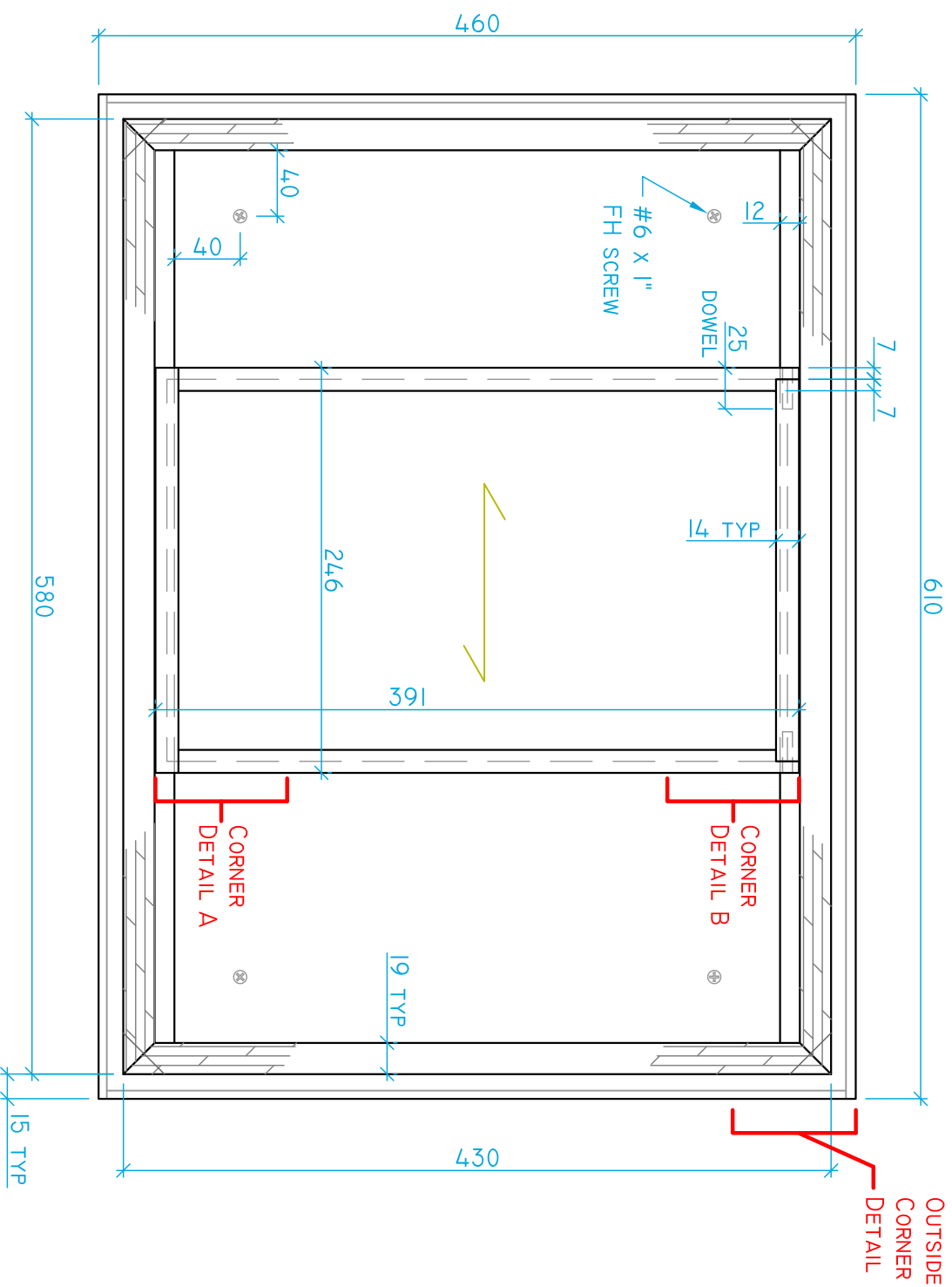


SECTION A : A SCALE 1:4

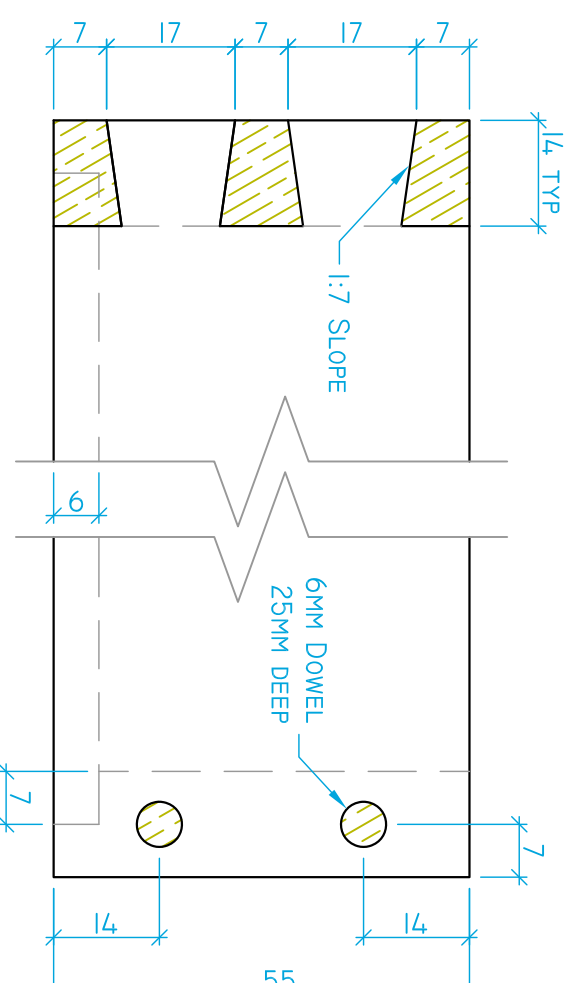
SECTION B : B SCALE 1:4

NOTE:
 DRAWINGS FOR TRAINING PURPOSES ONLY
 COMPETITION PROJECT MAY HAVE UP TO 30% CHANGE

NOTE:
DRAWINGS FOR TRAINING PURPOSES ONLY
COMPETITION PROJECT MAY HAVE UP TO 30% CHANGE



OUTSIDE CORNER DETAIL
SCALE 1 : 2



DETAIL A

DETAIL B

CORNER DETAIL
DOVETAIL TRAY
SCALE 1 : 1

SECTION C : C SCALE 1 : 4

NOTES:
SLIDING TRAY
2 CORNERS
- HAND CUT DOVETAILS
2 CORNERS
- RABBETED AND DOWELLED DOVETAIL JOINERY
HAND TOOLS ONLY
WILL BE MARKED BEFORE AND AFTER ASSEMBLY
- MITRE KEY MATERIAL SUPPLIED 3.2 THICK TO MATCH SAW BLADE

PROJECT:
MITRED CASE
WITH STAND

LEVEL:
POST
SECONDARY

DRAWING DESCRIPTION
SECTION C:C
& TRAY DETAIL

DATE:
FEB. 28, 2025

SCALE:
AS NOTED

DRAWN BY:
HB

SHEET:
3 OF 3