

4

3

2

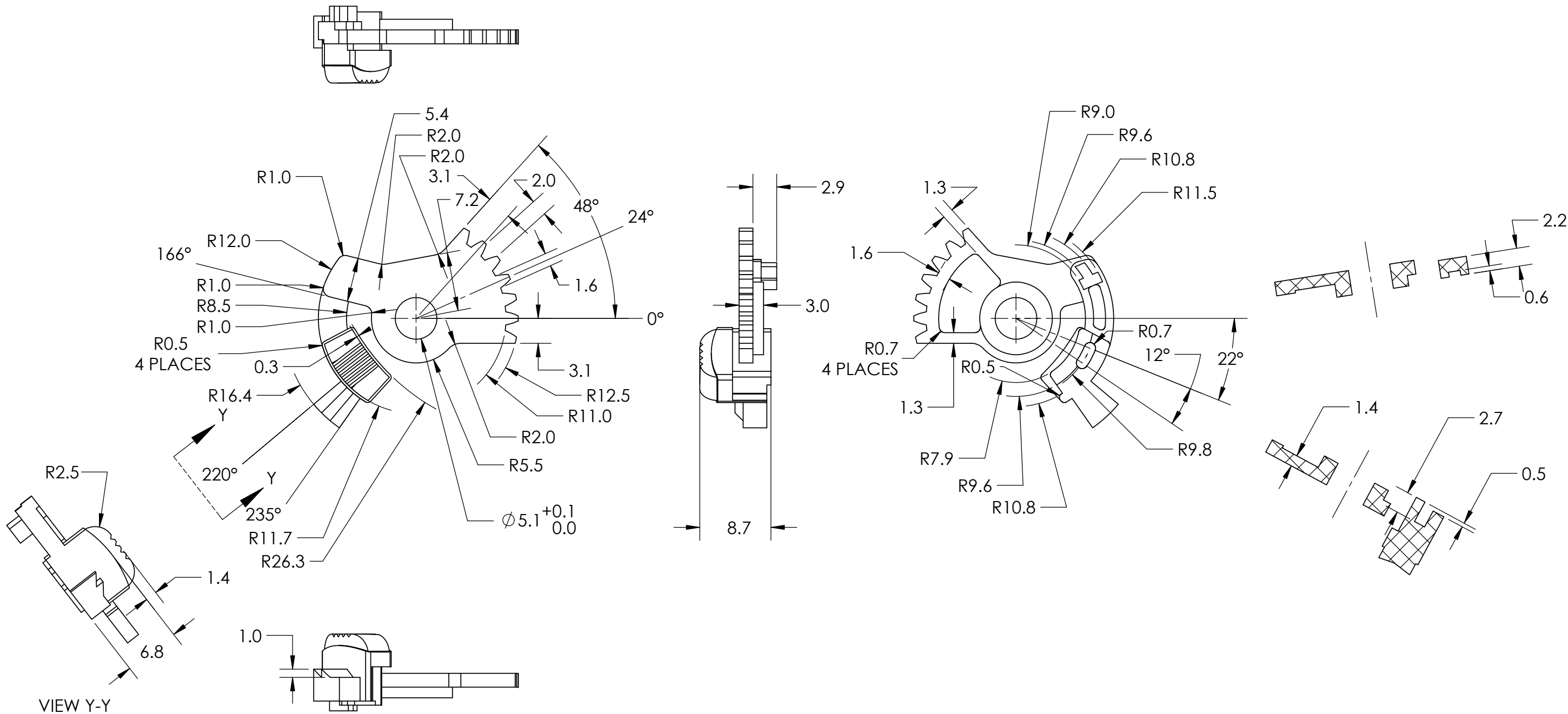
1

B

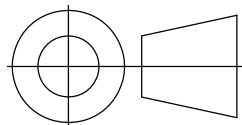
B

A

A



3RD ANGLE PROJECTION



UNLESS OTHERWISE SPECIFIED:

DIMENSIONS ARE IN MILLIMETERS
TOLERANCES FOR DIMENSIONS
NOT OTHERWISE LIMITED ARE AS
FOLLOWS:
ANGLES $\pm 1^\circ$
LINEAR DIMENSIONS ± 0.25

INTERPRET GEOMETRIC
TOLERANCING PER: ASME Y14.5-2018

Skills Alberta 2024

TITLE:

Adjuster

MATERIAL

Nylon 101

SIZE

B

SCALE: 2:1

SHEET 1 OF 4

4

3

2

1

4

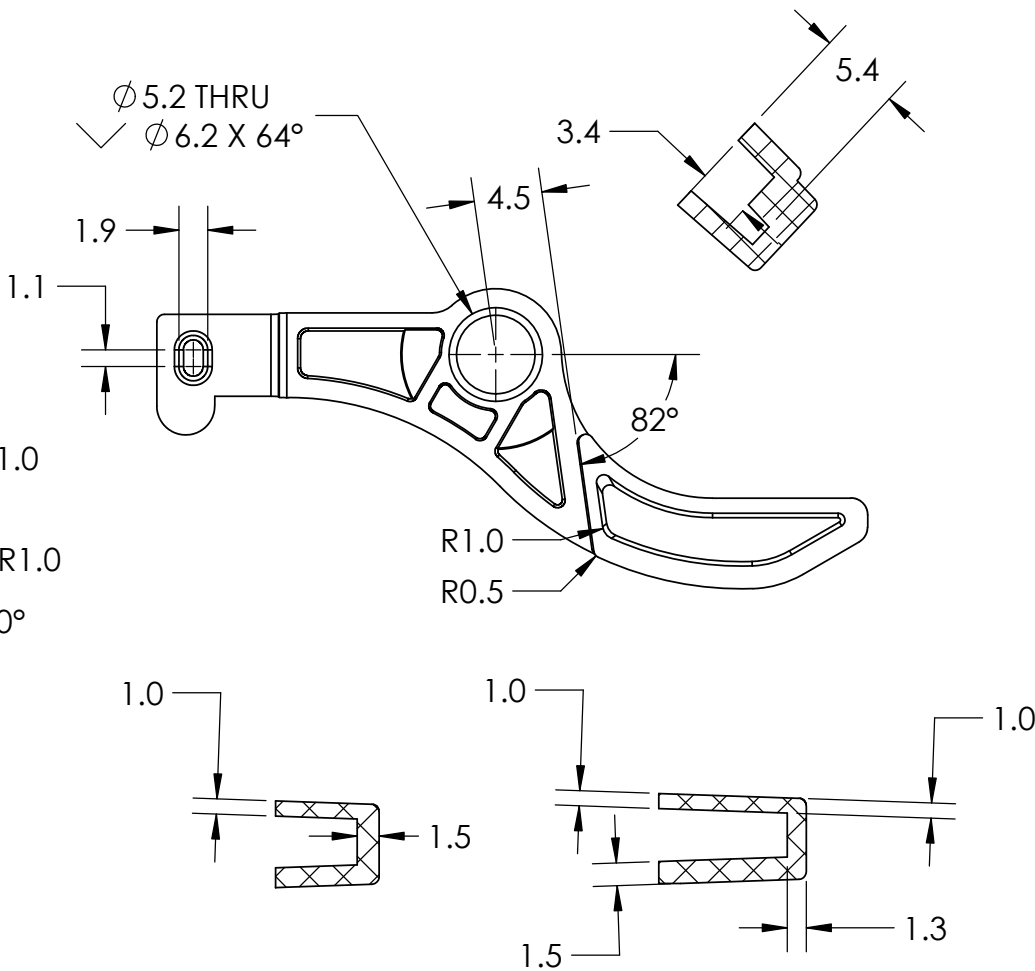
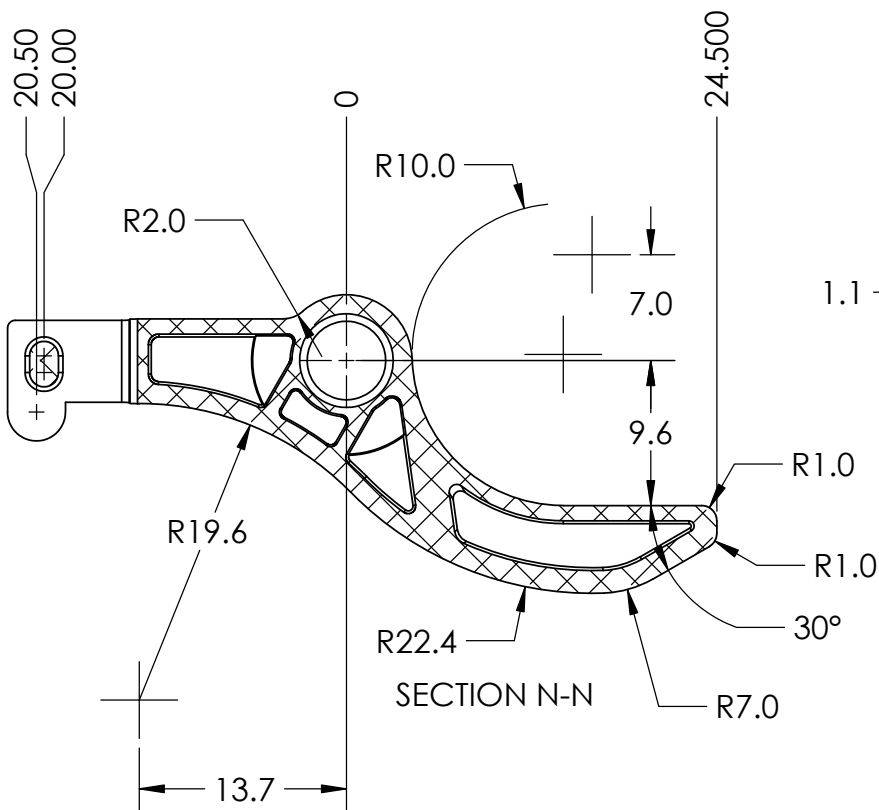
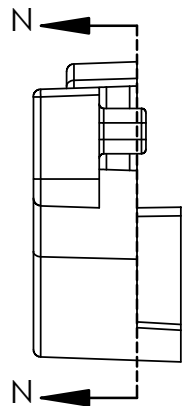
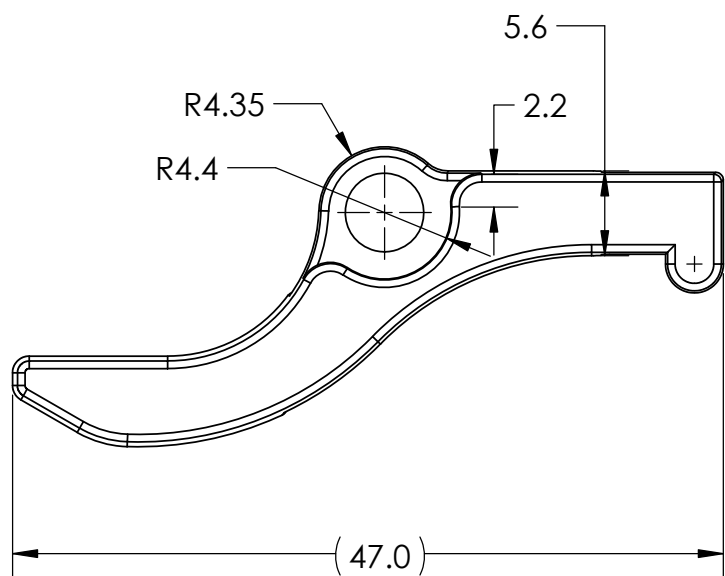
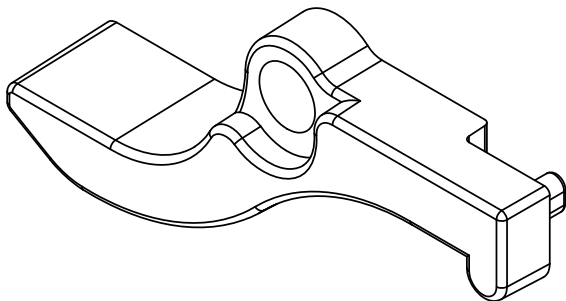
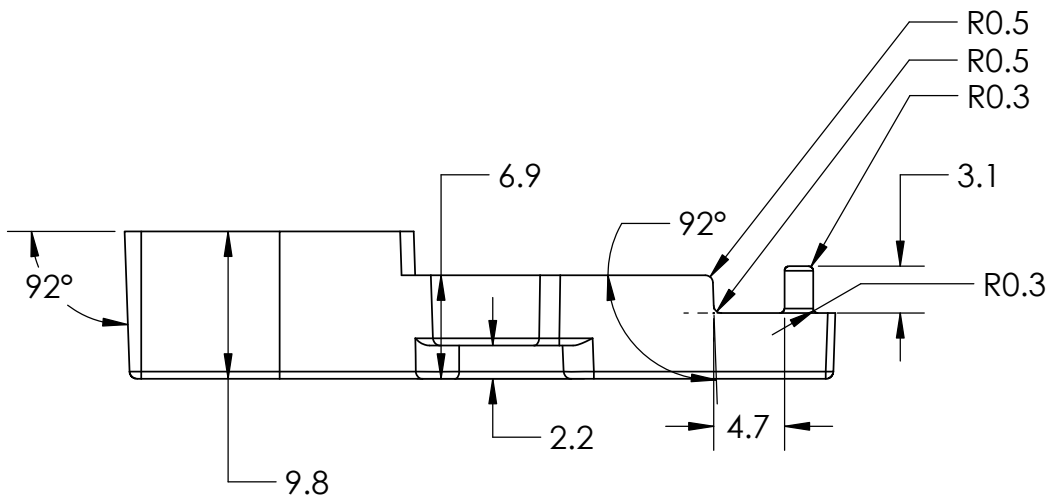
3

2

1

B

B



A

A

<div>3RD ANGLE PROJECTION</div> <div></div>	UNLESS OTHERWISE SPECIFIED:		Skills Alberta 2024		
	DIMENSIONS ARE IN MILLIMETERS TOLERANCES FOR DIMENSIONS NOT OTHERWISE LIMITED ARE AS FOLLOWS: ANGLES ±1° LINEAR DIMENSIONS ±0.25		TITLE: Lever		
	INTERPRET GEOMETRIC TOLERANCING PER: ASME Y14.5-2018		MATERIAL Nylon 101	SIZE B	SCALE: 2:1
				SHEET 2 OF 4	

4

3

2

1

4

3

2

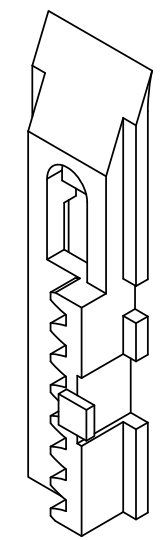
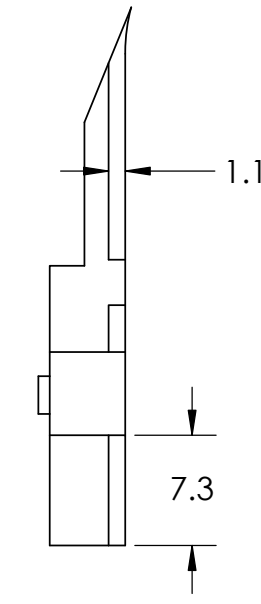
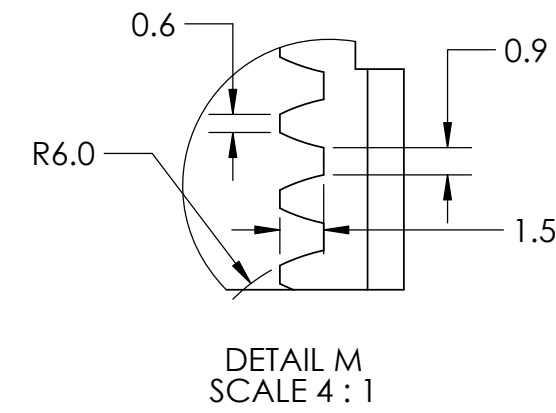
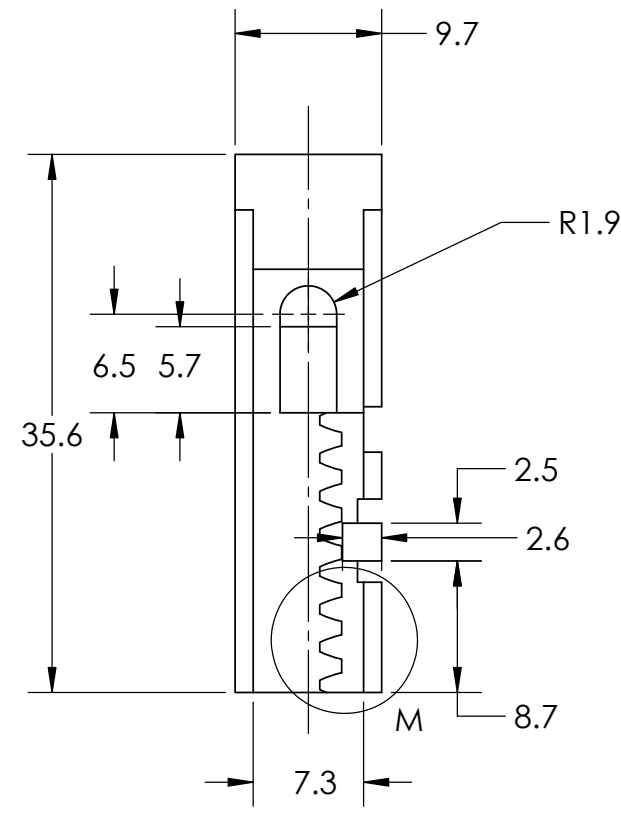
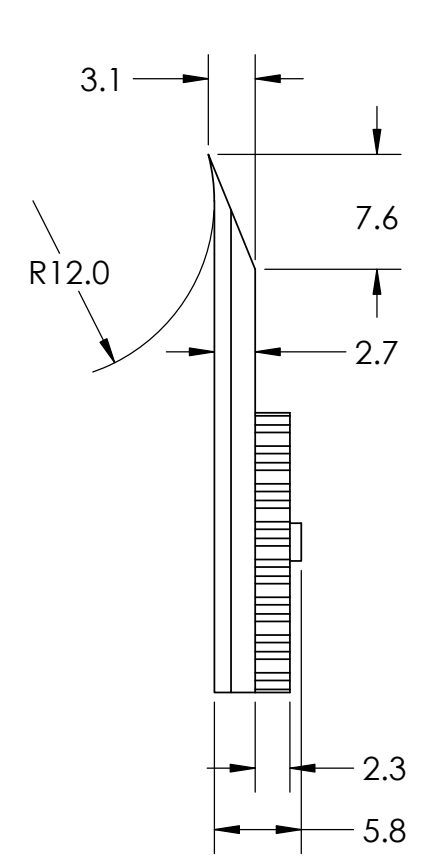
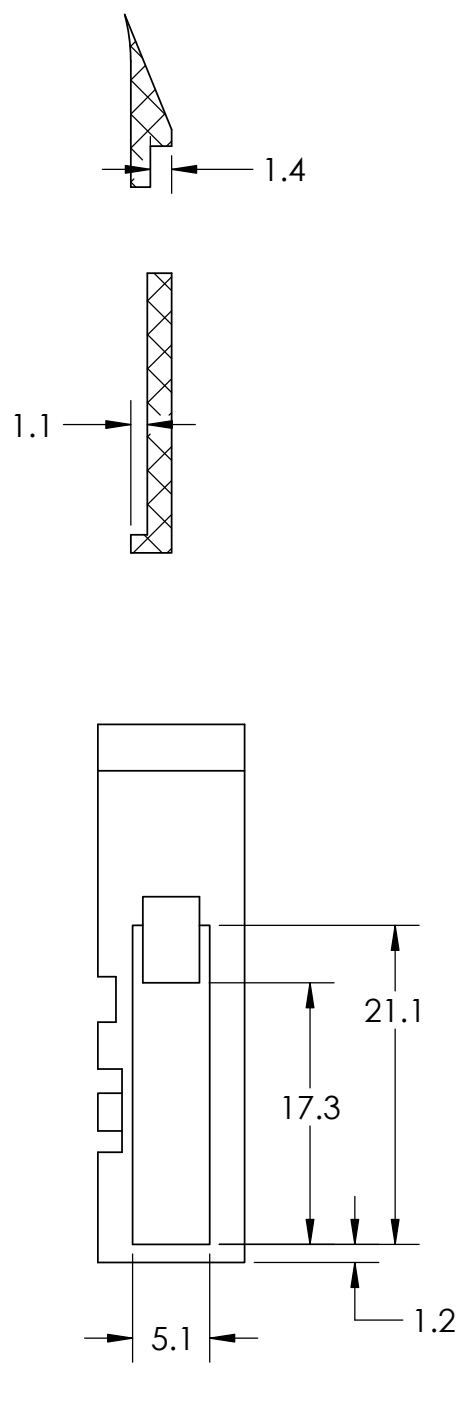
1

B

B

A

A



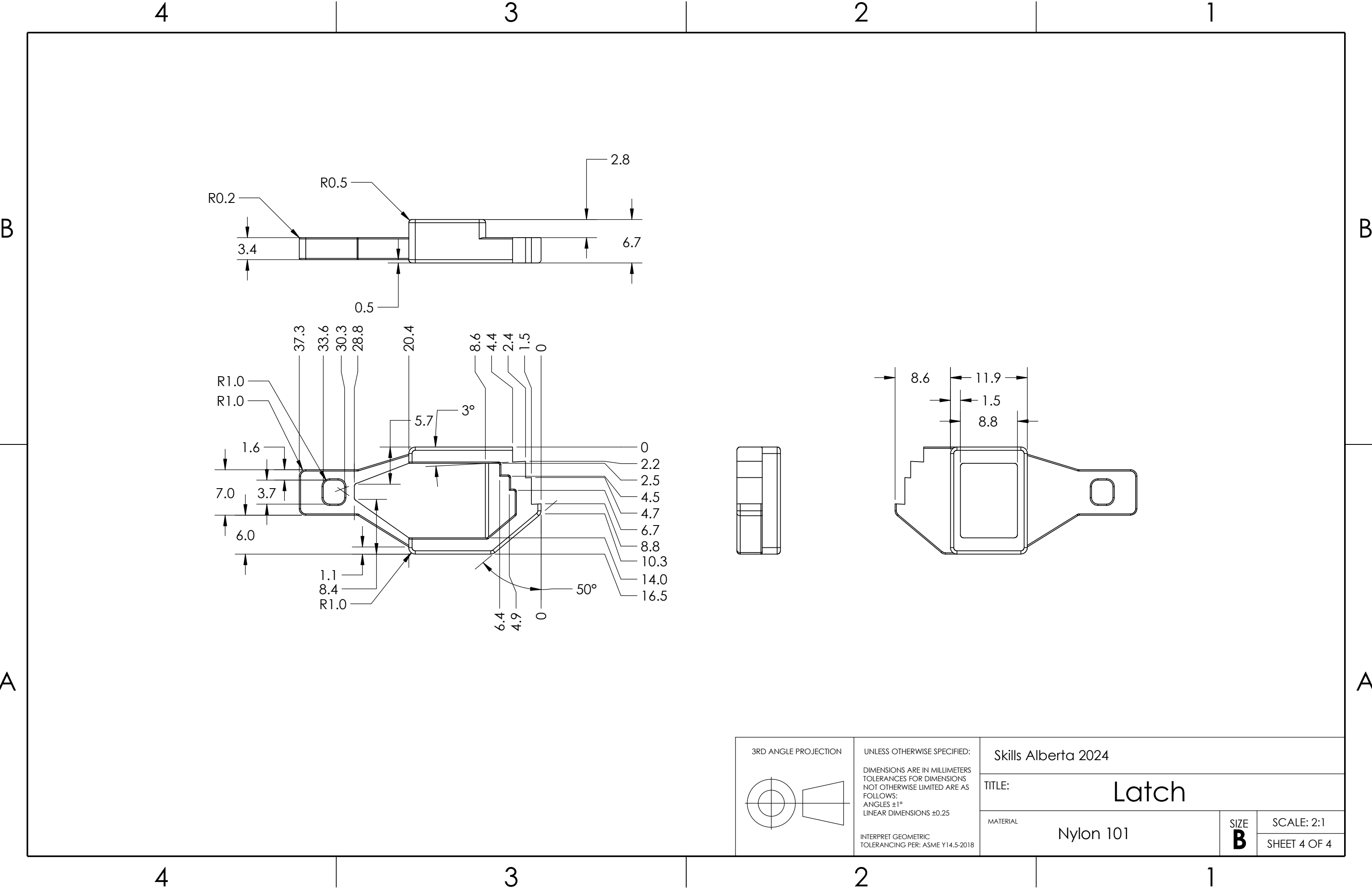
<div>3RD ANGLE PROJECTION</div> 	UNLESS OTHERWISE SPECIFIED: DIMENSIONS ARE IN MILLIMETERS TOLERANCES FOR DIMENSIONS NOT OTHERWISE LIMITED ARE AS FOLLOWS: ANGLES ±1° LINEAR DIMENSIONS ±0.25		Skills Alberta 2024		
	TITLE: Shim				
	MATERIAL Nylon 101		SIZE B	SCALE: 2:1	
			SHEET 3 OF 4		

4

3

2

1



3RD ANGLE PROJECTION		UNLESS OTHERWISE SPECIFIED: DIMENSIONS ARE IN MILLIMETERS TOLERANCES FOR DIMENSIONS NOT OTHERWISE LIMITED ARE AS FOLLOWS: ANGLES ±1° LINEAR DIMENSIONS ±0.25		Skills Alberta 2024	
		INTERPRET GEOMETRIC TOLERANCING PER: ASME Y14.5-2018		TITLE: Latch	
				MATERIAL: Nylon 101	SIZE: B SCALE: 2:1 SHEET 4 OF 4