

NOTES:

- TOP
 - PLYWOOD CORE WITH 50 MM SOLID MITRED EDGING
- UPPER CASE
 - MITRED PLYWOOD WITH 5 MM SOLID TOP EDGE
- LOWER STAND
 - "X" FRAME LEGS WITH CROSS LAP JOINT
 - STRAIGHT STRETCHER WITH TUSKED THROUGH TENON
 - TUSK WILL BE PROVIDED TO SIZE

PROJECT:

MITRED CASE WITH STAND

LEVEL:

HIGH SCHOOL

DRAWING DESCRIPTION

ORTHO VIEWS, DETAILS 1 & 2

DATE:

FEB. 28, 2025

SCALE:

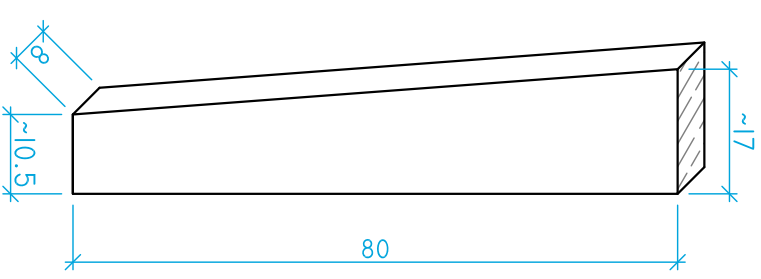
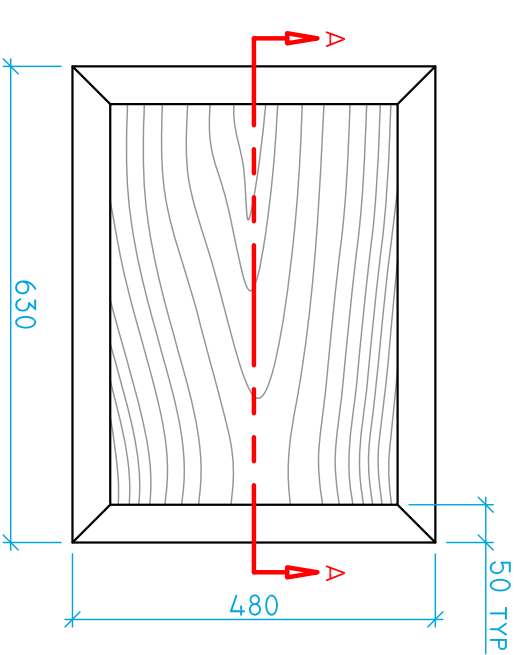
AS NOTED

DRAWN BY:

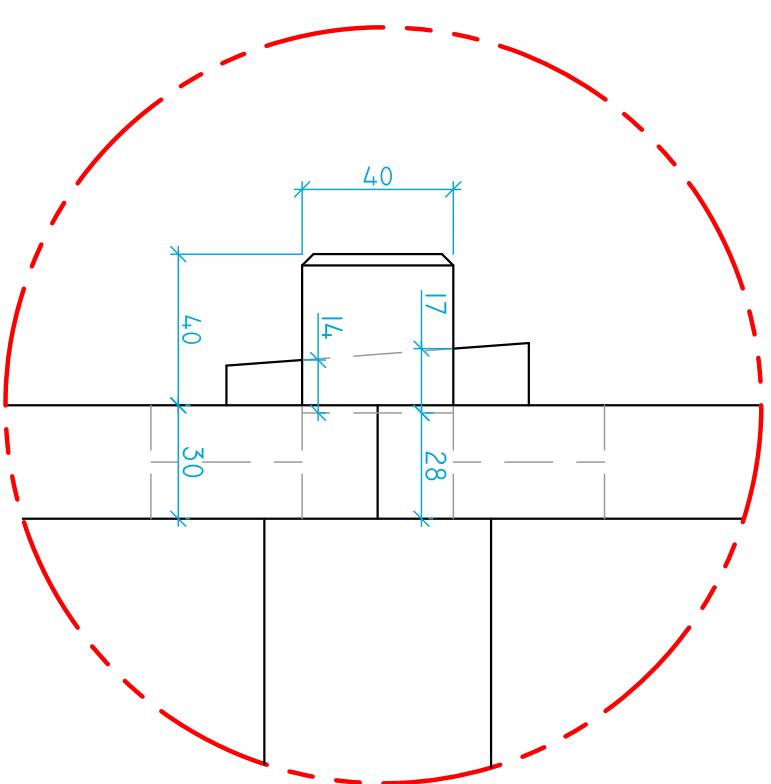
HB

SHEET:

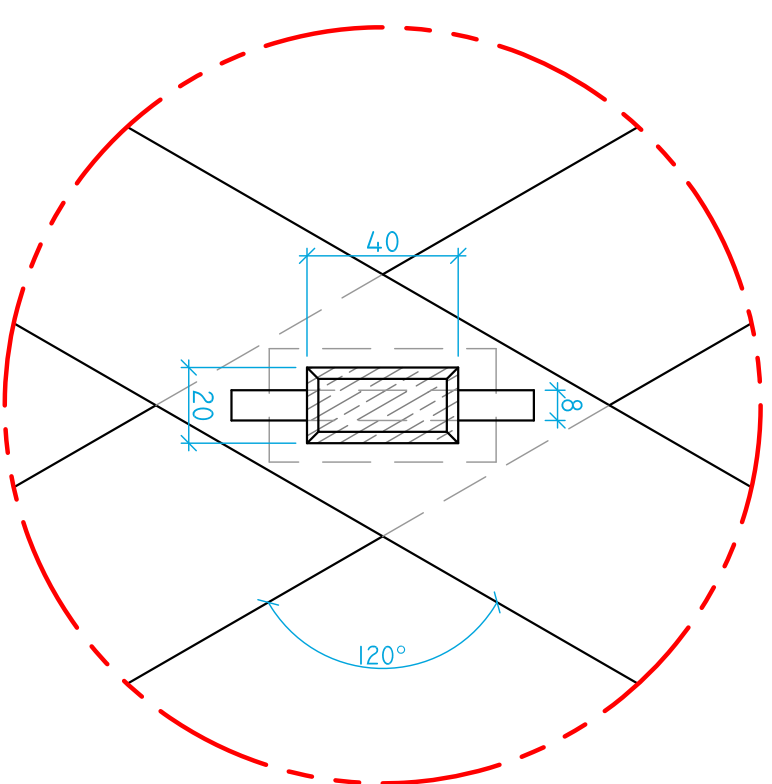
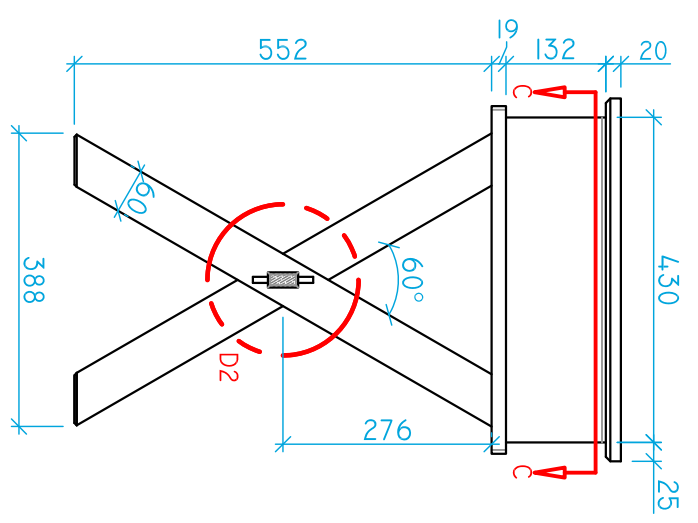
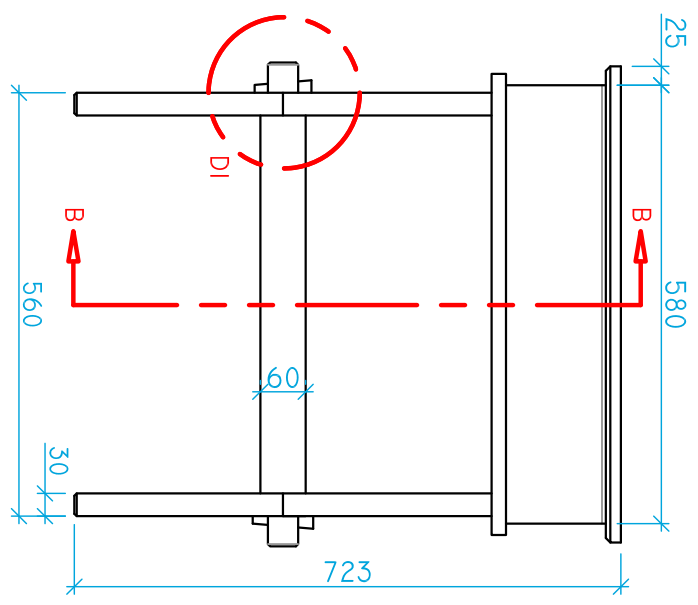
1 OF 3



TUSK DETAIL
SCALE 1 : 1



DETAIL 1
SCALE 1 : 2



DETAIL 2
SCALE 1:2

ORTHO VIEWS SCALE 1:10

NOTE:
DRAWINGS FOR TRAINING PURPOSES ONLY
COMPETITION PROJECT MAY HAVE UP TO 30% CHANGE

NOTES:

- LID HINGED ON LONG SIDE NON-MORTISE LID HINGE
- 12 MM BOTTOM IN 10 X 12 RABBIT
- DOVETAIL TRAY SLIDES ON 12 MM SOLID CLEATS
- PLYWOOD SUB TOP (BETWEEN CASE AND STAND) SUPPLIED TO SIZE & EDGED
- CROSS LAP JOINERY ON LEG FRAMES

PROJECT:

MITRED CASE WITH STAND

LEVEL:

HIGH SCHOOL

DRAWING DESCRIPTION

SECTION A:A,
SECTION B:B

DATE:

FEB. 28, 2025

SCALE:

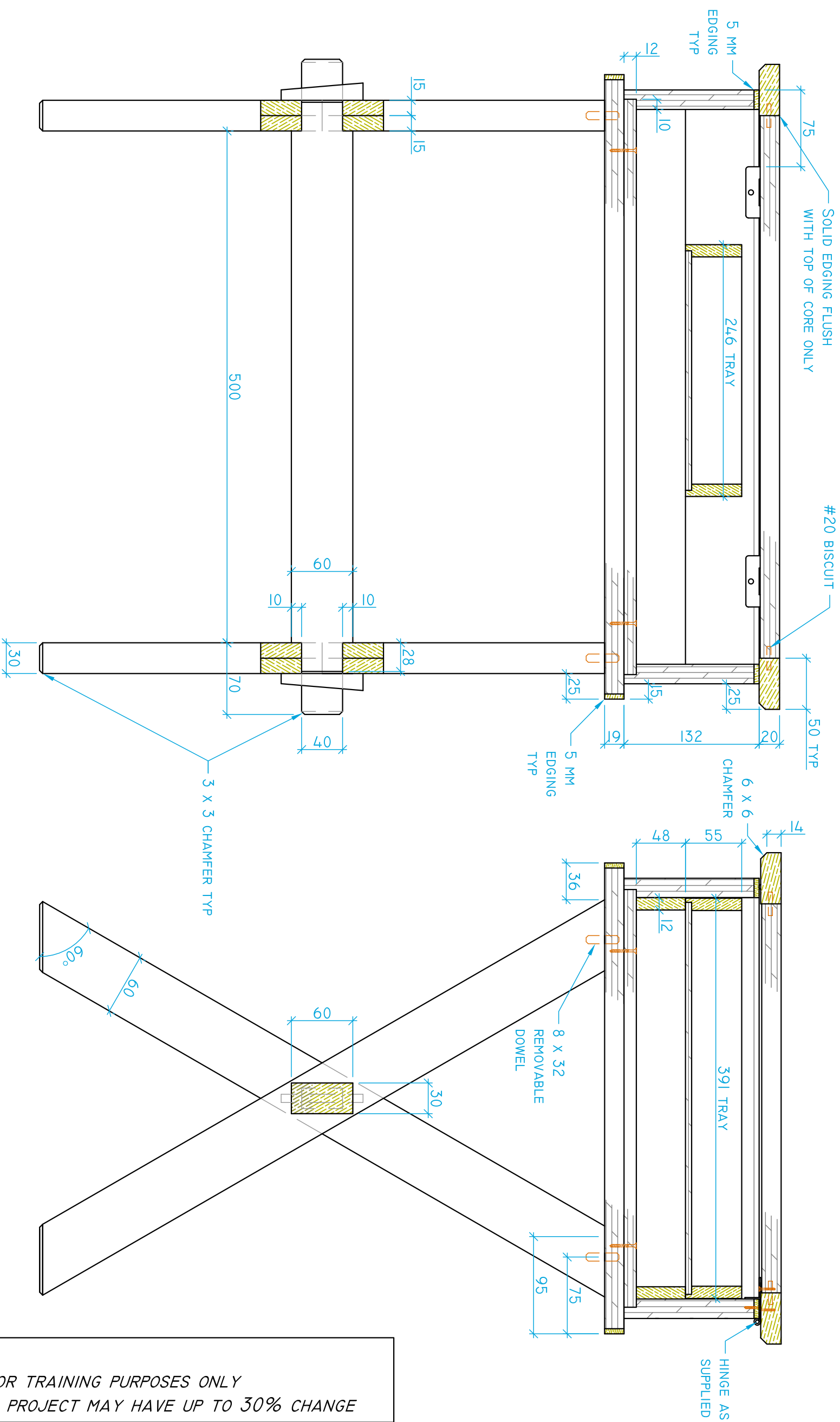
AS NOTED

DRAWN BY:

HB

SHEET:

2 OF 3



SECTION A : A SCALE 1:4

SECTION B : B SCALE 1:4

NOTE:
DRAWINGS FOR TRAINING PURPOSES ONLY
COMPETITION PROJECT MAY HAVE UP TO 30% CHANGE

NOTE:
 DRAWINGS FOR TRAINING PURPOSES ONLY
 COMPETITION PROJECT MAY HAVE UP TO 30% CHANGE



NOTES:
 - DOVETAIL JOINERY
 HAND TOOLS ONLY
 WILL BE MARKED BEFORE
 AND AFTER ASSEMBLY

PROJECT:
 MITRED CASE
 WITH STAND

LEVEL:
 HIGH SCHOOL

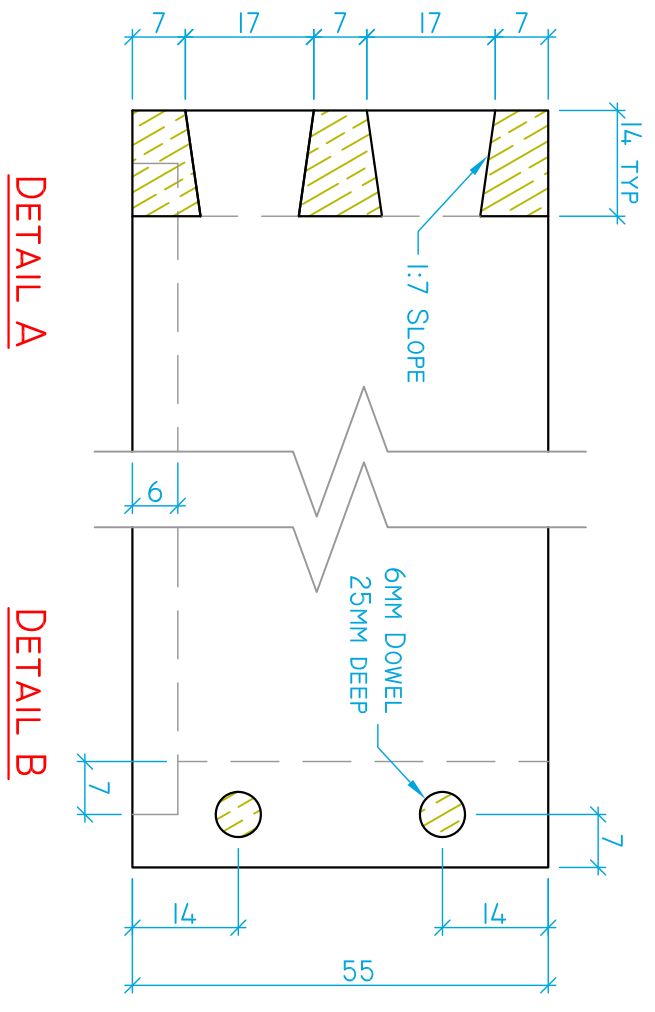
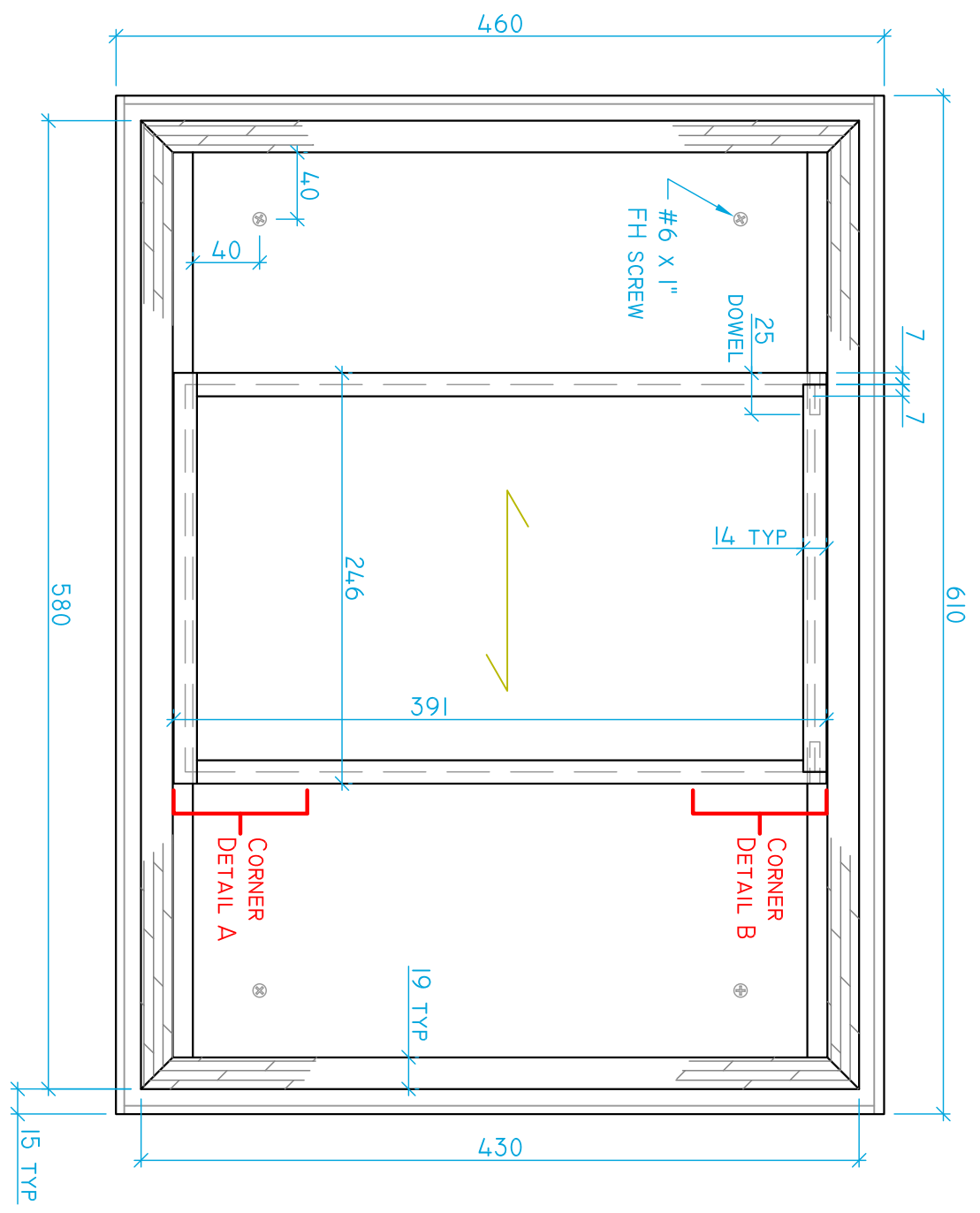
DRAWING DESCRIPTION
 SECTION C:C
 & TRAY DETAIL

DATE:
 FEB. 28, 2025

SCALE:
 AS NOTED

DRAWN BY:
 HB

SHEET:
 3 OF 3



**DOVETAIL TRAY
 CORNER DETAILS
 SCALE 1 : 1**

SECTION C : C SCALE 1 : 4